



TEST REPORT IEC 60950-1 Information technology equipment – Safety – Part 1: General requirements	
Report Reference No.	T1711005-056
Tested by (printed name and signature)	Cheryl Zhang 
Approved by (printed name and signature)	Samantha Xue 
Date of issue	2017-11-06
Testing Laboratory Name	Cerpass Technology (Suzhou) Co., Ltd.
Address	No.66, Tangzhuang Road, Suzhou Industrial Park, Jiangsu, China.
Applicant's name	Zhejiang Dahua Vision Technology Co., Ltd.
Address	No.1199 Bin'an Road, Changhe Street, Binjiang District, Hangzhou, P.R. China.
Test specification:	
Standard	IEC 60950-1:2005 (Second Edition) + A1:2009 + A2:2013 and/or EN 60950-1:2006+A11:2009+A1:2010+A12:2011+A2:2013
Test procedure	Service of CE Marking in LVD
Non-standard test method	N/A
Test item description	IP Camera
Trade Mark	
Manufacturer	Zhejiang Dahua Vision Technology Co., Ltd No.1199 Bin'an road, Changhe Street, Binjiang District, Hangzhou, P.R. China.
Model/Type reference	1)DH-IPC-HDW4830EMN-AS, DH-IPC-HDW4830EMP-AS, IPC-HDW4830EMP-AS, IPC-HDW4830EMN-AS, DH-IPC-HDW48B0EMN-AS, IPC-HDW48B0EMN-AS 2) DH-IPC-HDW4231EMN-AS, IPC-HDW4231EMN-AS, DH-IPC-HDW4231EMP-AS, IPC-HDW4231EMP-AS, DH-IPC-HDW42B1EMN-AS, IPC-HDW42B1EMN-AS, DH-IPC-HDW4231EMN, IPC-HDW4231EMN, DH-IPC-HDW4231EMP, IPC-HDW4231EMP,



DH-IPC-HDW42B1EMN, DH-IPC-HDW4231EMN-ASE,
DH-IPC-HDW4231EMP-ASE, DH-IPC-HDW4431EMN-ASE,
DH-IPC-HDW4431EMP-ASE, DH-IPC-HDW4631EMN-ASE,
DH-IPC-HDW4631EMP-ASE, DH-IPC-HDW4831EMN-ASE,
DH-IPC-HDW4831EMP-ASE, IPC-HDW4231EMN-ASE,
IPC-HDW4231EMN-ASE, IPC-HDW4231EMP-ASE,
IPC-HDW4431EMN-ASE, IPC-HDW4431EMP-ASE,
IPC-HDW4631EMN-ASE, IIPC-HDW4631EMP-ASE,
IPC-HDW4831EMN-ASE, IPC-HDW4831EMP-ASE

3)DH-IPC-HDW4431EMN-AS, IPC-HDW4431EMN-AS, DH-IPC-
HDW4431EMP-AS, IPC-HDW4431EMP-AS, DH-IPC-
HDW44B1EMN-AS, IPC-HDW44B1EMN-AS, DH-IPC-
HDW4431EMN, IPC-HDW4431EMNS, DH-IPC-HDW4431EMP,
IPC-HDW4431EMP, DH-IPC-HDW44B1EMN,
IPC-HDW4631EMP-AS, IPC-HDW4631EMN-AS,
DH-IPC-HDW4631EMP-AS, DH-IPC-HDW4631EMN-AS,
IPC-HDW4831EMP-AS, IPC-HDW4831EMN-AS,
DH-IPC-HDW4831EMP-AS, DH-IPC-HDW4831EMN-AS, **LA-
IHDW1230EMP-0280B-S2, LA-IHDW1230EMP-0360B-S2**

Ratings : I/P: 12Vdc, 0.5A/ POE: 48Vdc, 150mA

**Particulars: test item vs. test requirements**

Equipment mobility.....	: Stationary equipment
Connection to the mains	: Not directly connected to the mains
Operating condition.....	: Continuous
Access location	: Restricted access location
Over voltage category (OVC)	: N/A
Mains supply tolerance (%) or absolute mains supply values	: N/A
Tested for IT power systems	: N/A
IT testing, phase-phase voltage (V)	: N/A
Class of equipment	: Class III
Considered current rating (A)	: N/A
Pollution degree (PD)	: PD 2
IP protection class	: IP X0
Altitude during operation (m)	: <2000 m
Altitude of test laboratory (m)	: <2000 m
Mass of equipment (kg)	: 0.47Kg

Possible test case verdicts:

- test case does not apply to the test object	: N/A
- test object does meet the requirement.....	: P (Pass)
- test object does not meet the requirement.....	: F (Fail)

Testing

Date of receipt of test item	: 2017-11-01
Date(s) of performance of tests	: 2017-11-01 to 2017-11-03

**General remarks:**

The test results presented in this report relate only to the object tested.

This report shall not be reproduced, except in full, without the written approval of the Issuing testing laboratory.

"(see Enclosure #)" refers to additional information appended to the report.

"(see appended table)" refers to a table appended to the report.

Throughout this report a point is used as the decimal separator.

The instructions specified by the standard have to be in official language of each country, however, only English is checked for this report. It is the applicant responsibility to provide instruction in each official language of the EU.

This report is submitted for the exclusive use of the client to whom it is addressed. Its significance is subject to the adequacy and representative character of the sample(s) and to the comprehensiveness of the tests, examinations or surveys made.

This report justified only the submitted samples exclusively and not necessarily implies that all other samples are also to be found in same result.

The CE marking may only be used if all relevant and effective EC directives are complied with.

Factor(ies):

1). Zhejiang Dahua Vision Technology Co., Ltd.

Address: No.1199 Bin'An Road, Changhe Street, Binjiang District, Hangzhou, P.R. China.

2). Zhejiang Dahua Zhilian Co., Ltd.

Address: No.28, Dongqiao Road, Dongzhou Street, Fuyang District, Hangzhou, P.R.China.

General product information:

1. The equipment is an IP Camera for use in general office equipment. All electrical components are mounted on V-1 PCB and housed in metal enclosure fixed by screws.

2. This product is intended to be supplied by a Listed Power Unit, marked with 'Limited Power Source', 'LPS' on unit, output rated minimum 12Vdc, 0.5A; or POE: 48Vdc, 0.15A, and Tma=60°C "or equivalent statement provided in operating manual, if power unit is not provided.

4. When installing the equipment, all requirements of the mentioned standard must be fulfilled.

5.Models differences are listed below:

1) Models DH-IPC-HDW4830EMN-AS, DH-IPC-HDW4830EMP-AS, IPC-HDW4830EMP-AS, IPC-HDW4830EMN-AS, DH-IPC-HDW48B0EMN-AS, and IPC-HDW48B0EMN-AS are identical except model designations for marketing purposes.

2) Models DH-IPC-HDW4231EMN-AS, IPC-HDW4231EMN-AS, DH-IPC-HDW4231EMP-AS, IPC-HDW4231EMP-AS, DH-IPC-HDW42B1EMN-AS, IPC-HDW42B1EMN-AS, DH-IPC-HDW4231EMN, IPC-HDW4231EMN, DH-IPC-HDW4231EMP, IPC-HDW4231EMP, DH-IPC-HDW42B1EMN, DH-IPC-HDW4231EMN-ASE, DH-IPC-HDW4231EMP-ASE, DH-IPC-HDW4431EMN-ASE, DH-IPC-HDW4431EMP-ASE, DH-IPC-HDW4631EMN-ASE, DH-IPC-HDW4631EMP-ASE, DH-IPC-HDW4831EMN-ASE, DH-IPC-HDW4831EMP-ASE, IPC-HDW4231EMN-ASE, IPC-HDW4231EMP-ASE, IPC-HDW4431EMN-ASE, IPC-HDW4431EMP-ASE, IPC-HDW4631EMN-ASE, IIPC-HDW4631EMP-ASE, IPC-HDW4831EMN-ASE, and IPC-HDW4831EMP-ASE are identical except model designations for marketing purposes.



- 3) Models DH-IPC-HDW4431EMN-AS, IPC-HDW4431EMN-AS, DH-IPC-HDW4431EMP-AS, IPC-HDW4431EMP-AS, DH-IPC-HDW44B1EMN-AS, IPC-HDW44B1EMN-AS, DH-IPC-HDW4431EMN, IPC-HDW4431EMNS, DH-IPC-HDW4431EMP, IPC-HDW4431EMP, DH-IPC-HDW44B1EMN, IPC-HDW4631EMP-AS, IPC-HDW4631EMN-AS, DH-IPC-HDW4631EMP-AS, DH-IPC-HDW4631EMN-AS, IPC-HDW4831EMP-AS, IPC-HDW4831EMN-AS, DH-IPC-HDW4831EMP-AS, DH-IPC-HDW4831EMN-AS, **LA-IHDW1230EMP-0280B-S2**, and **LA-IHDW1230EMP-0360B-S2** are identical except model designations for marketing purposes.
- 4) Models DH-IPC-HDW4830EMN-AS, DH-IPC-HDW4231EMN-AS, and DH-IPC-HDW4431EMN-AS are similar except employing different sensor boards, different main boards, and different lens.
6. The equipment intended for installation in a restricted access location, the warning shall be either
- The symbol (IEC 60417-5041 (DB:2002-10)):
 - Or the following or similar wording:
- WARNING**
HOT SURFACE
DO NOT TOUCH
7. All ports complied with limited power source, see appended table 2.5.
8. According to applicant's requirements, ceiling and wall mounted means are evaluated.
9. Unless otherwise indicated, all tests were applied on Models DH-IPC-HDW4830EMN-AS, DH-IPC-HDW4231EMN-AS, and DH-IPC-HDW4431EMN-AS to represent the other similar models.

Other comments:

The artwork below may be only a draft. The use of certification marks on a product must be authorized by the respective NCBs that own these marks.

The manufacturer specified maximum ambient temperature as $T_{ma} = 60^{\circ}\text{C}$

**Copy of marking plate:**

Note: This is the representative label, and the others are the same except model number and market requirements.



Additional marking: Symbol per IEC 60417-2 No.5041 appears for metal enclosure

Front HOT surface.



IEC 60950-1			
Clause	Requirement + Test	Result - Remark	Verdict
1	GENERAL		P
1.5	Components		P
1.5.1	General		P
	Comply with IEC 60950-1 or relevant component standard	(see appended tables 1.5.1)	P
1.5.2	Evaluation and testing of components	Components that are certified to IEC and /or national standards are used correctly within their ratings. Components not covered by IEC standards are tested under the conditions present in the equipment.	P
1.5.3	Thermal controls	No thermal control.	N/A
1.5.4	Transformers	This equipment is powered by SELV power source, no transformer in this equipment.	N/A
1.5.5	Interconnecting cables	No interconnecting cables provided.	N/A
1.5.6	Capacitors bridging insulation	No such capacitor.	N/A
1.5.7	Resistors bridging insulation	No such resistor.	N/A
1.5.7.1	Resistors bridging functional, basic or supplementary insulation	Same as above.	N/A
1.5.7.2	Resistors bridging double or reinforced insulation between a.c. mains and other circuits	Same as above.	N/A
1.5.7.3	Resistors bridging double or reinforced insulation between a.c. mains and antenna or coaxial cable	Same as above.	N/A
1.5.8	Components in equipment for IT power systems	No such components.	N/A
1.5.9	Surge suppressors		N/A
1.5.9.1	General		N/A
1.5.9.2	Protection of VDRs		N/A
1.5.9.3	Bridging of functional insulation by a VDR		N/A
1.5.9.4	Bridging of basic insulation by a VDR		N/A
1.5.9.5	Bridging of supplementary, double or reinforced insulation by a VDR		N/A
1.6	Power interface		P



IEC 60950-1			
Clause	Requirement + Test	Result - Remark	Verdict
1.6.1	AC power distribution systems	DC Powerd equipment.	N/A
1.6.2	Input current	(see appended table 1.6.2)	P
1.6.3	Voltage limit of hand-held equipment	This appliance is not handheld equipment.	N/A
1.6.4	Neutral conductor	No such construction	N/A

1.7	Marking and instructions		P
1.7.1	Power rating and identification markings	The required marking is located on the outside surface of the equipment.	P
1.7.1.1	Power rating marking	See below.	P
	Multiple mains supply connections.....:		N/A
	Rated voltage(s) or voltage range(s) (V)	Refer to the Test item description at the beginning of this TestReport.	P
	Symbol for nature of supply, for d.c. only	---	P
	Rated frequency or rated frequency range (Hz):		N/A
	Rated current (mA or A)	Refer to the Test item description at the beginning of this TestReport.	P
1.7.1.2	Identification markings	See below.	P
	Manufacturer's name or trade-mark or identification mark	Refer to the Test item description at the beginning of this TestReport.	P
	Model identification or type reference	Refer to the Test item description at the beginning of this TestReport.	P
	Symbol for Class II equipment only	Not a class II equipment.	N/A
	Other markings and symbols	Additional symbols or markings do not give risk to misunderstanding.	P
1.7.1.3	Use of graphical symbols		N/A
1.7.2	Safety instructions and marking	See below.	P
1.7.2.1	General	The user's manual contains information for operation, installation, servicing, transport, storage and technical data. The operation	P



IEC 60950-1			
Clause	Requirement + Test	Result - Remark	Verdict
		guide is provided to the user.	
1.7.2.2	Disconnect devices	The EUT is not provided with a main disconnect device. In order to provide an acceptable disconnect device in the end use equipment, one disconnect device shall be provided for each product.	P
1.7.2.3	Overcurrent protective device	No such devices used.	N/A
1.7.2.4	IT power distribution systems	Certified adapter used	N/A
1.7.2.5	Operator access with a tool	No tool is required to gain access to operator access area.	N/A
1.2.7.6	Ozone	No ozone produces within this equipment.	N/A
1.7.3	Short duty cycles	Equipment is designed for continuous operation.	N/A
1.7.4	Supply voltage adjustment	No adjustment of supply voltage necessary.	N/A
	Methods and means of adjustment; reference to installation instructions	Same as above.	N/A
1.7.5	Power outlets on the equipment	No outlet provided.	N/A
1.7.6	Fuse identification (marking, special fusing characteristics, cross-reference)	No fuse provided.	N/A
1.7.7	Wiring terminals	No such terminals provided	N/A
1.7.7.1	Protective earthing and bonding terminals		N/A
1.7.7.2	Terminals for a.c. mains supply conductors	Class III equipment.	N/A
1.7.7.3	Terminals for d.c. mains supply conductors	No d.c. Mains supply.	N/A
1.7.8	Controls and indicators	See below.	P
1.7.8.1	Identification, location and marking	The function of controls affecting safety is obvious regardless of language.	P
1.7.8.2	Colours	Colors of the LED indicator are used for functional controls or indicators.	P
1.7.8.3	Symbols according to IEC 60417		P
1.7.8.4	Markings using figures	No indicators for different positions.	N/A
1.7.9	Isolation of multiple power sources	Two connections supply safety	N/A



IEC 60950-1			
Clause	Requirement + Test	Result - Remark	Verdict
		voltages.	
1.7.10	Thermostats and other regulating devices :	No such device provided	N/A
1.7.11	Durability	<p>The label was subjected to the permanence of marking test. The label was rubbed with cloth soaked with water for 15s and then again for 15 s with the cloth soaked with petroleum spirit.</p> <p>After this test there was no damage to the label. The marking on the label did not fade. There was neither curling nor lifting of the label edge.</p>	P
1.7.12	Removable parts	No removable part provided.	N/A
1.7.13	Replaceable batteries :	<p>Replaceable battery is placed in an service and operator access area.</p> <p>The marking or statement shall in the servicing and operating instructions:</p> <p><small>This marking or statement shall include the following or similar text:</small></p> <p style="text-align: center;"><small>CAUTION</small></p> <p style="text-align: center;"><small>RISK OF EXPLOSION IF BATTERY IS REPLACED BY AN INCORRECT TYPE.</small></p> <p style="text-align: center;"><small>DISPOSE OF USED BATTERIES ACCORDING TO THE INSTRUCTIONS</small></p>	P
	Language(s) :	English.	—
1.7.14	Equipment for restricted access locations :	<p>The installation instruction contains the state:</p> <p>This equipment intended only for installation in a restricted access locations.</p>	P

2	PROTECTION FROM HAZARDS		P
2.1	Protection from electric shock and energy hazards (The equipment supplied by SELV circuit and in which hazardous voltages are not generated.)		P
2.1.1	Protection in operator access areas	No access with test finger ,test pin and test probe to any parts with hazardous energized parts.	P
2.1.1.1	Access to energized parts		N/A



IEC 60950-1			
Clause	Requirement + Test	Result - Remark	Verdict
	Test by inspection		N/A
	Test with test finger (Figure 2A)		N/A
	Test with test pin (Figure 2B)		N/A
	Test with test probe (Figure 2C)	No TNV Circuit.	N/A
2.1.1.2	Battery compartments		N/A
2.1.1.3	Access to ELV wiring		N/A
	Working voltage (V_{peak} or V_{rms}); minimum distance through insulation (mm)		—
2.1.1.4	Access to hazardous voltage circuit wiring		N/A
2.1.1.5	Energy hazards		P
2.1.1.6	Manual controls		N/A
2.1.1.7	Discharge of capacitors in equipment		N/A
	Measured voltage (V); time-constant (s)		—
2.1.1.8	Energy hazards – d.c. mains supply		N/A
	a) Capacitor connected to the d.c. mains supply		N/A
	b) Internal battery connected to the d.c. mains supply		N/A
2.1.1.9	Audio amplifiers		N/A
2.1.2	Protection in service access areas		N/A
2.1.3	Protection in restricted access locations		N/A
2.2	SELV circuits (The equipment supplied by SELV circuit and in which hazardous voltages are not generated.)		P
2.2.1	General requirements	SELV CIRCUITS shall exhibit voltages that are safe to touch both under normal operating conditions and after a single fault. If no external load is applied to the SELV CIRCUIT (open circuit), the voltage limits of 2.2.2 and 2.2.3 shall not be exceeded.	P
2.2.2	Voltages under normal conditions (V)	All accessible voltage are less 42.4V peak or 60Vdc and are classified as SELV.	P



IEC 60950-1			
Clause	Requirement + Test	Result - Remark	Verdict
2.2.3	Voltages under fault conditions (V)	Internal no voltage raise components cause excessive voltage in accessible SELV circuits. Limits of 71V peak and 120Vdc were not exceeded for a period longer than 0.2s.	P
2.2.4	Connection of SELV circuits to other circuits	SELV circuits are only connected to other SELV circuits.	P

2.3	TNV circuits (No such circuit within the equipment)		N/A
2.3.1	Limits	No TNV Circuits.	N/A
	Type of TNV circuits		—
2.3.2	Separation from other circuits and from accessible parts		N/A
2.3.2.1	General requirements		N/A
2.3.2.2	Protection by basic insulation		N/A
2.3.2.3	Protection by earthing		N/A
2.3.2.4	Protection by other constructions		N/A
2.3.3	Separation from hazardous voltages		N/A
	Insulation employed.....		—
2.3.4	Connection of TNV circuits to other circuits		N/A
	Insulation employed.....		—
2.3.5	Test for operating voltages generated externally		N/A

2.4	Limited current circuits (Class III equipment)		N/A
2.4.1	General requirements	Nolimited current circuits.	N/A
2.4.2	Limit values		N/A
	Frequency (Hz).....		—
	Measured current (mA)		—
	Measured voltage (V)		—
	Measured circuit capacitance (nF or μ F).....		—



IEC 60950-1			
Clause	Requirement + Test	Result - Remark	Verdict
2.4.3	Connection of limited current circuits to other circuits		N/A

2.5	Limited power sources		P
	a) Inherently limited output	(see appended table 2.5)	P
	b) Impedance limited output		N/A
	c) Regulating network or IC current limiter, limits output under normal operating and single fault condition		N/A
	Use of integrated circuit (IC) current limiters		N/A
	d) Overcurrent protective device limited output		N/A
	Max. output voltage (V), max. output current (A), max. apparent power (VA).....		—
	Current rating of overcurrent protective device (A) ∴		—

2.6	Provisions for earthing and bonding (Class III equipment)		N/A
2.6.1	Protective earthing		N/A
2.6.2	Functional earthing		N/A
	Use of symbol for functional earthing		N/A
2.6.3	Protective earthing and protective bonding conductors		N/A
2.6.3.1	General		N/A
2.6.3.2	Size of protective earthing conductors		N/A
	Rated current (A), cross-sectional area (mm ²), AWG		—
2.6.3.3	Size of protective bonding conductors		N/A
	Rated current (A), cross-sectional area (mm ²), AWG		—
	Protective current rating (A), cross-sectional area (mm ²), AWG		N/A
2.6.3.4	Resistance of earthing conductors and their terminations; resistance (Ω), voltage drop (V), test current (A), duration (min)		N/A
2.6.3.5	Colour of insulation		N/A



IEC 60950-1			
Clause	Requirement + Test	Result - Remark	Verdict
2.6.4	Terminals		N/A
2.6.4.1	General		N/A
2.6.4.2	Protective earthing and bonding terminals		N/A
	Rated current (A), type, nominal thread diameter (mm)		—
2.6.4.3	Separation of the protective earthing conductor from protective bonding conductors		N/A
2.6.5	Integrity of protective earthing		N/A
2.6.5.1	Interconnection of equipment		N/A
2.6.5.2	Components in protective earthing conductors and protective bonding conductors		N/A
2.6.5.3	Disconnection of protective earth		N/A
2.6.5.4	Parts that can be removed by an operator		N/A
2.6.5.5	Parts removed during servicing		N/A
2.6.5.6	Corrosion resistance		N/A
2.6.5.7	Screws for protective bonding		N/A
2.6.5.8	Reliance on telecommunication network or cable distribution system		N/A

2.7	Overcurrent and earth fault protection in primary circuits (Class III equipment)		N/A
2.7.1	Basic requirements		N/A
	Instructions when protection relies on building installation		N/A
2.7.2	Faults not simulated in 5.3.7		N/A
2.7.3	Short-circuit backup protection		N/A
2.7.4	Number and location of protective devices		N/A
2.7.5	Protection by several devices		N/A
2.7.6	Warning to service personnel		N/A

2.8	Safety interlocks (No such safety interlocks)		N/A
2.8.1	General principles		N/A
2.8.2	Protection requirements		N/A
2.8.3	Inadvertent reactivation		N/A



IEC 60950-1			
Clause	Requirement + Test	Result - Remark	Verdict
2.8.4	Fail-safe operation		N/A
	Protection against extreme hazard		N/A
2.8.5	Moving parts		N/A
2.8.6	Overriding		N/A
2.8.7	Switches, relays and their related circuits		N/A
2.8.7.1	Separation distances for contact gaps and their related circuits (mm)		N/A
2.8.7.2	Overload test		N/A
2.8.7.3	Endurance test		N/A
2.8.7.4	Electric strength test		N/A
2.8.8	Mechanical actuators		N/A

2.9	Electrical insulation		P
2.9.1	Properties of insulating materials	Natural rubber, asbestos or hygroscopic materials are not used.	P
2.9.2	Humidity conditioning		N/A
	Relative humidity (%), temperature (°C)		—
2.9.3	Grade of insulation	Functional insulation.	P
2.9.4	Separation from hazardous voltages	No direct mains connection.	N/A
	Method(s) used		—

2.10	Clearances, creepage distances and distances through insulation (The equipment supplied by SELV circuit and in which hazardous voltages are not generated.)		N/A
2.10.1	General	Functional Insulation only is considered and complied with sub-clause 5.3.4	N/A
2.10.1.1	Frequency	DC supplied.	N/A
2.10.1.2	Pollution degrees	Pollution degrees 2.	N/A
2.10.1.3	Reduced values for functional insulation	No minimum clearance or creepage distance for functional insulation.	N/A
2.10.1.4	Intervening unconnected conductive parts		N/A
2.10.1.5	Insulation with varying dimensions		N/A
2.10.1.6	Special separation requirements		N/A



IEC 60950-1			
Clause	Requirement + Test	Result - Remark	Verdict
2.10.1.7	Insulation in circuits generating starting pulses		N/A
2.10.2	Determination of working voltage		N/A
2.10.2.1	General		N/A
2.10.2.2	RMS working voltage		N/A
2.10.2.3	Peak working voltage		N/A
2.10.3	Clearances		N/A
2.10.3.1	General		N/A
2.10.3.2	Mains transient voltages		N/A
	a) AC mains supply		N/A
	b) Earthed d.c. mains supplies		N/A
	c) Unearthed d.c. mains supplies		N/A
	d) Battery operation		N/A
2.10.3.3	Clearances in primary circuits		N/A
2.10.3.4	Clearances in secondary circuits		N/A
2.10.3.5	Clearances in circuits having starting pulses		N/A
2.10.3.6	Transients from a.c. mains supply		N/A
2.10.3.7	Transients from d.c. mains supply		N/A
2.10.3.8	Transients from telecommunication networks and cable distribution systems		N/A
2.10.3.9	Measurement of transient voltage levels		N/A
	a) Transients from a mains supply		N/A
	For an a.c. mains supply		N/A
	For a d.c. mains supply		N/A
	b) Transients from a telecommunication network :		N/A
2.10.4	Creepage distances		N/A
2.10.4.1	General		N/A
2.10.4.2	Material group and comparative tracking index		N/A
	CTI tests		—
2.10.4.3	Minimum creepage distances		N/A



IEC 60950-1			
Clause	Requirement + Test	Result - Remark	Verdict
2.10.5	Solid insulation		N/A
2.10.5.1	General		N/A
2.10.5.2	Distances through insulation		N/A
2.10.5.3	Insulating compound as solid insulation		N/A
2.10.5.4	Semiconductor devices		N/A
2.10.5.5.	Cemented joints		N/A
2.10.5.6	Thin sheet material – General		N/A
2.10.5.7	Separable thin sheet material		N/A
	Number of layers (pcs)		—
2.10.5.8	Non-separable thin sheet material		N/A
2.10.5.9	Thin sheet material – standard test procedure		N/A
	Electric strength test		—
2.10.5.10	Thin sheet material – alternative test procedure		N/A
	Electric strength test		—
2.10.5.11	Insulation in wound components		N/A
2.10.5.12	Wire in wound components		N/A
	Working voltage		N/A
	a) Basic insulation not under stress		N/A
	b) Basic, supplementary, reinforced insulation		N/A
	c) Compliance with Annex U		N/A
	Two wires in contact inside wound component; angle between 45° and 90° ..		N/A
2.10.5.13	Wire with solvent-based enamel in wound components		N/A
	Electric strength test		—
	Routine test		N/A
2.10.5.14	Additional insulation in wound components		N/A
	Working voltage		N/A
	- Basic insulation not under stress		N/A
	- Supplementary, reinforced insulation		N/A
2.10.6	Construction of printed boards		N/A



IEC 60950-1			
Clause	Requirement + Test	Result - Remark	Verdict
2.10.6.1	Uncoated printed boards		N/A
2.10.6.2	Coated printed boards		N/A
2.10.6.3	Insulation between conductors on the same inner surface of a printed board		N/A
2.10.6.4	Insulation between conductors on different layers of a printed board		N/A
	Distance through insulation		N/A
	Number of insulation layers (pcs)		N/A
2.10.7	Component external terminations		N/A
2.10.8	Tests on coated printed boards and coated components		N/A
2.10.8.1	Sample preparation and preliminary inspection		N/A
2.10.8.2	Thermal conditioning		N/A
2.10.8.3	Electric strength test		N/A
2.10.8.4	Abrasion resistance test		N/A
2.10.9	Thermal cycling		N/A
2.10.10	Test for Pollution Degree 1 environment and insulating compound		N/A
2.10.11	Tests for semiconductor devices and cemented joints		N/A
2.10.12	Enclosed and sealed parts		N/A

3	WIRING, CONNECTIONS AND SUPPLY		P
3.1	General		P
3.1.1	Current rating and overcurrent protection	All wires have suitable and adequate current capability.	P
3.1.2	Protection against mechanical damage	Wireways are smooth and free from sharp edges.	P
3.1.3	Securing of internal wiring	All internal wiring is secured well.	P
3.1.4	Insulation of conductors	The conductors have adequate insulation ability.	P
3.1.5	Beads and ceramic insulators	No such insulators used.	N/A
3.1.6	Screws for electrical contact pressure	No electrical contact pressure by screwed connection	N/A
3.1.7	Insulating materials in electrical connections		N/A



IEC 60950-1			
Clause	Requirement + Test	Result - Remark	Verdict
3.1.8	Self-tapping and spaced thread screws	No self-tapping or spaced thread screws used.	N/A
3.1.9	Termination of conductors	All conductors are reliably secured.	N/A
	10 N pull test		N/A
3.1.10	Sleeving on wiring	No sleeve used as supplementary insulation	N/A

3.2	Connection to a mains supply (Class III equipment)		N/A
3.2.1	Means of connection		N/A
3.2.1.1	Connection to an a.c. mains supply		N/A
3.2.1.2	Connection to a d.c. mains supply		N/A
3.2.2	Multiple supply connections		N/A
3.2.3	Permanently connected equipment		N/A
	Number of conductors, diameter of cable and conduits (mm)		—
3.2.4	Appliance inlets		N/A
3.2.5	Power supply cords		N/A
3.2.5.1	AC power supply cords		N/A
	Type		—
	Rated current (A), cross-sectional area (mm ²), AWG		—
3.2.5.2	DC power supply cords		N/A
3.2.6	Cord anchorages and strain relief		N/A
	Mass of equipment (kg), pull (N)		—
	Longitudinal displacement (mm)		—
3.2.7	Protection against mechanical damage		N/A
3.2.8	Cord guards		N/A
	Diameter or minor dimension D (mm); test mass (g)		—
	Radius of curvature of cord (mm).....		—
3.2.9	Supply wiring space		N/A

3.3	Wiring terminals for connection of external conductors (Class III equipment)		N/A
------------	--	--	-----



IEC 60950-1			
Clause	Requirement + Test	Result - Remark	Verdict
3.3.1	Wiring terminals		N/A
3.3.2	Connection of non-detachable power supply cords		N/A
3.3.3	Screw terminals		N/A
3.3.4	Conductor sizes to be connected		N/A
	Rated current (A), cord/cable type, cross-sectional area (mm ²)		—
3.3.5	Wiring terminal sizes		N/A
	Rated current (A), type, nominal thread diameter (mm)		—
3.3.6	Wiring terminal design		N/A
3.3.7	Grouping of wiring terminals		N/A
3.3.8	Stranded wire		N/A
3.4	Disconnection from the mains supply (Class III equipment)		N/A
3.4.1	General requirement		N/A
3.4.2	Disconnect devices		N/A
3.4.3	Permanently connected equipment		N/A
3.4.4	Parts which remain energized		N/A
3.4.5	Switches in flexible cords		N/A
3.4.6	Number of poles - single-phase and d.c. equipment		N/A
3.4.7	Number of poles - three-phase equipment		N/A
3.4.8	Switches as disconnect devices		N/A
3.4.9	Plugs as disconnect devices		N/A
3.4.10	Interconnected equipment		N/A
3.4.11	Multiple power sources		N/A
3.5	Interconnection of equipment		P
3.5.1	General requirements	Only SELV circuits are connected to SELV.	P
3.5.2	Types of interconnection circuits	SELV	P
3.5.3	ELV circuits as interconnection circuits	No ELV interconnections.	N/A



IEC 60950-1			
Clause	Requirement + Test	Result - Remark	Verdict
3.5.4	Data ports for additional equipment	All data ports complied with sub-clause 2.5.	P

4	PHYSICAL REQUIREMENTS		P
4.1	Stability		N/A
	Angle of 10°	Stationary equipment.	N/A
	Test force (N)		N/A
4.2	Mechanical strength		P
4.2.1	General		P
	Rack-mounted equipment.		N/A
4.2.2	Steady force test, 10 N		N/A
4.2.3	Steady force test, 30 N		N/A
4.2.4	Steady force test, 250 N		N/A
4.2.5	Impact test		N/A
	Fall test		N/A
	Swing test		N/A
4.2.6	Drop test; height (mm)		N/A
4.2.7	Stress relief test	Metal enclosure provided.	N/A
4.2.8	Cathode ray tubes		N/A
	Picture tube separately certified		N/A
4.2.9	High pressure lamps		N/A
4.2.10	Wall or ceiling mounted equipment; force (N)	After stress relief test, 50N was applied downwards through the centre of gravity of the equipment for 1 minute, after the test, the equipment including the associated mounting plate was not be damaged.	P

4.3	Design and construction		P
4.3.1	Edges and corners	Edges and corners of the enclosure are rounded.	P
4.3.2	Handles and manual controls; force (N)	No such handle or control.	N/A
4.3.3	Adjustable controls	No such control	N/A



IEC 60950-1			
Clause	Requirement + Test	Result - Remark	Verdict
4.3.4	Securing of parts	No connection likely to be exposed to mechanical stress is provided in unit.	P
4.3.5	Connection by plugs and sockets	No mismatching of connectors, Plugs or sockets possible.	P
4.3.6	Direct plug-in equipment	Stationary equipment.	N/A
	Torque		—
	Compliance with the relevant mains plug standard		N/A
4.3.7	Heating elements in earthed equipment		N/A
4.3.8	Batteries	(see appended tables 4.3.8)	P
	- Overcharging of a rechargeable battery	(see appended tables 4.3.8)	P
	- Unintentional charging of a non-rechargeable battery		N/A
	- Reverse charging of a rechargeable battery	The construction preventing the reverse charging.	P
	- Excessive discharging rate for any battery	RTC battery is considered safe under short-circuiting conditions and therefore are not tested for discharge.	P
4.3.9	Oil and grease	No oil and grease.	N/A
4.3.10	Dust, powders, liquids and gases	Equipment in intended use not considered to be exposed to these.	N/A
4.3.11	Containers for liquids or gases	No container for liquid or gases.	N/A
4.3.12	Flammable liquids	No flammable liquids.	N/A
	Quantity of liquid (l)		N/A
	Flash point (°C)		N/A
4.3.13	Radiation	See below.	P
4.3.13.1	General		P
4.3.13.2	Ionizing radiation	No ionizing radiation.	N/A
	Measured radiation (pA/kg)		—
	Measured high-voltage (kV)		—
	Measured focus voltage (kV)		—
	CRT markings		—




IEC 60950-1			
Clause	Requirement + Test	Result - Remark	Verdict

4.3.13.3	Effect of ultraviolet (UV) radiation on materials		N/A
	Part, property, retention after test, flammability classification		N/A
4.3.13.4	Human exposure to ultraviolet (UV) radiation		N/A
4.3.13.5	Lasers (including laser diodes) and LEDs		P
4.3.13.5.1	Lasers (including laser laser diodes)		N/A
	Laser class		—
4.3.13.5.2	Light emitting diodes (LEDs)	The LED power is far below Class 1 LED limit.	P
4.3.13.6	Other types		N/A

4.4	Protection against hazardous moving parts		N/A
4.4.1	General	No hazardous moving part within this equipment.	N/A
4.4.2	Protection in operator access areas		N/A
	Household and home/office document/media shredders		N/A
4.4.3	Protection in restricted access locations		N/A
4.4.4	Protection in service access areas		N/A
4.4.5	Protection against moving fan blades		N/A
4.4.5.1	General		N/A
	Not considered to cause pain or injury. a).....:		N/A
	Is considered to cause pain, not injury. b)		N/A
	Considered to cause injury. c)		N/A
4.4.5.2	Protection for users		N/A
	Use of symbol or warning		N/A
4.4.5.3	Protection for service persons		N/A
	Use of symbol or warning		N/A

4.5	Thermal requirements		P
4.5.1	General	No exceeding temperature.	P



IEC 60950-1			
Clause	Requirement + Test	Result - Remark	Verdict
4.5.2	Temperature tests	(see appended table 4.5)	P
	Normal load condition per Annex L	(see Annex L)	—
4.5.3	Temperature limits for materials	(see appended table 4.5)	P
4.5.4	Touch temperature limits	<p>A temperature of 90°C is permitted for metal enclosure when equipment intended for installation in a restricted access location.</p> <p> or WARNING HOT SURFACE DO NOT TOUCH</p> <p>should be show on the metal enclosure.</p> <p>(see appended table 4.5)</p>	P
4.5.5	Resistance to abnormal heat		N/A
4.6	Openings in enclosures		N/A
4.6.1	Top and side openings	No openings.	N/A
	Dimensions (mm)	See above.	—
4.6.2	Bottoms of fire enclosures	No fire enclosure is required.	N/A
	Construction of the bottommm, dimensions (mm) .		—
4.6.3	Doors or covers in fire enclosures		N/A
4.6.4	Openings in transportable equipment	Sationary equipment.	N/A
4.6.4.1	Constructional design measures		N/A
	Dimensions (mm)		—
4.6.4.2	Evaluation measures for larger openings		N/A
4.6.4.3	Use of metallized parts		N/A
4.6.5	Adhesives for constructional purposes		N/A
	Conditioning temperature (°C), time (weeks)		—
4.7	Resistance to fire		P
4.7.1	Reducing the risk of ignition and spread of flame	Use of materials with the required flammability classes	P
	Method 1, selection and application of components wiring and materials	Method 1 used.	P



IEC 60950-1			
Clause	Requirement + Test	Result - Remark	Verdict
	Method 2, application of all of simulated fault condition tests		N/A
4.7.2	Conditions for a fire enclosure	See below	P
4.7.2.1	Parts requiring a fire enclosure	See sub-clause 4.7.2.2.	N/A
4.7.2.2	Parts not requiring a fire enclosure	The appliance with: - Supply of components in the secondary circuit by a limited power source - The components are mounted on PCB material of flammability rating min. V-1. The fire enclosure is not required.	P
4.7.3	Materials		P
4.7.3.1	General	Integrated circuits and small electrical parts mounted on a printed wiring board min. rated V-1.	P
4.7.3.2	Materials for fire enclosures	See sub-clause 4.7.2.2	N/A
4.7.3.3	Materials for components and other parts outside fire enclosures		N/A
4.7.3.4	Materials for components and other parts inside fire enclosures	PCB:V-1 or better	P
4.7.3.5	Materials for air filter assemblies	No air filter assembly within this equipment.	N/A
4.7.3.6	Materials used in high-voltage components	No high-voltage component within this equipment.	N/A

5	ELECTRICAL REQUIREMENTS AND SIMULATED ABNORMAL CONDITIONS		N/A
5.1	Touch current and protective conductor current (Class III equipment, and do not connected to telecommunication networks and cable distribution systems)		N/A
5.1.1	General		N/A
5.1.2	Configuration of equipment under test (EUT)		N/A
5.1.2.1	Single connection to an a.c. mains supply		N/A
5.1.2.2	Redundant multiple connections to an a.c. mains supply		N/A
5.1.2.3	Simultaneous multiple connections to an a.c. mains supply		N/A
5.1.3	Test circuit		N/A



IEC 60950-1			
Clause	Requirement + Test	Result - Remark	Verdict
5.1.4	Application of measuring instrument		N/A
5.1.5	Test procedure		N/A
5.1.6	Test measurements		N/A
	Supply voltage (V)		—
	Measured touch current (mA)		—
	Max. allowed touch current (mA)		—
	Measured protective conductor current (mA)		—
	Max. allowed protective conductor current (mA)		—
5.1.7	Equipment with touch current exceeding 3,5 mA		N/A
5.1.7.1	General		N/A
5.1.7.2	Simultaneous multiple connections to the supply		N/A
5.1.8	Touch currents to telecommunication networks and cable distribution systems and from telecommunication networks		N/A
5.1.8.1	Limitation of the touch current to a telecommunication network or to a cable distribution system		N/A
	Supply voltage (V)		—
	Measured touch current (mA)		—
	Max. allowed touch current (mA)		—
5.1.8.2	Summation of touch currents from telecommunication networks		N/A
	a) EUT with earthed telecommunication ports		N/A
	b) EUT whose telecommunication ports have no reference to protective earth		N/A
5.2	Electric strength		N/A
5.2.1	General	Class III equipment.	N/A
5.2.2	Test procedure		N/A
5.3	Abnormal operating and fault conditions		N/A
5.3.1	Protection against overload and abnormal operation		N/A
5.3.2	Motors		N/A
5.3.3	Transformers		N/A



IEC 60950-1			
Clause	Requirement + Test	Result - Remark	Verdict
5.3.4	Functional insulation		N/A
5.3.5	Electromechanical components		N/A
5.3.6	Audio amplifiers in ITE		N/A
5.3.7	Simulation of faults		N/A
5.3.8	Unattended equipment		N/A
5.3.9	Compliance criteria for abnormal operating and fault conditions		N/A
5.3.9.1	During the tests	No fire or overheating occurred.	N/A
5.3.9.2	After the tests		N/A
6	CONNECTION TO TELECOMMUNICATION NETWORKS (Class III equipment, and do not connected to telecommunication networks)		N/A
6.1	Protection of telecommunication network service persons, and users of other equipment connected to the network, from hazards in the equipment		N/A
6.1.1	Protection from hazardous voltages		N/A
6.1.2	Separation of the telecommunication network from earth		N/A
6.1.2.1	Requirements		N/A
	Supply voltage (V)		—
	Current in the test circuit (mA)		—
6.1.2.2	Exclusions		N/A
6.2	Protection of equipment users from overvoltages on telecommunication networks		N/A
6.2.1	Separation requirements		N/A
6.2.2	Electric strength test procedure		N/A
6.2.2.1	Impulse test		N/A
6.2.2.2	Steady-state test		N/A
6.2.2.3	Compliance criteria		N/A
6.3	Protection of the telecommunication wiring system from overheating		N/A
	Max. output current (A)		—
	Current limiting method		—



IEC 60950-1			
Clause	Requirement + Test	Result - Remark	Verdict

7	CONNECTION TO CABLE DISTRIBUTION SYSTEMS (Class III equipment, and do not connected to cable distribution systems)		N/A
7.1	General		N/A
7.2	Protection of cable distribution system service persons, and users of other equipment connected to the system, from hazardous voltages in the equipment		N/A
7.3	Protection of equipment users from overvoltages on the cable distribution system		N/A
7.4	Insulation between primary circuits and cable distribution systems		N/A
7.4.1	General		N/A
7.4.2	Voltage surge test		N/A
7.4.3	Impulse test		N/A

A	ANNEX A, TESTS FOR RESISTANCE TO HEAT AND FIRE		N/A
A.1	Flammability test for fire enclosures of movable equipment having a total mass exceeding 18 kg, and of stationary equipment (see 4.7.3.2)		N/A
A.1.1	Samples.....:		—
	Wall thickness (mm).....:		—
A.1.2	Conditioning of samples; temperature (°C)		N/A
A.1.3	Mounting of samples		N/A
A.1.4	Test flame (see IEC 60695-11-3)		N/A
	Flame A, B, C or D		—
A.1.5	Test procedure		N/A
A.1.6	Compliance criteria		N/A
	Sample 1 burning time (s)		—
	Sample 2 burning time (s)		—
	Sample 3 burning time (s)		—
A.2	Flammability test for fire enclosures of movable equipment having a total mass not exceeding 18 kg, and for material and components located inside fire enclosures (see 4.7.3.2 and 4.7.3.4)		N/A
A.2.1	Samples, material.....:		—
	Wall thickness (mm).....:		—
A.2.2	Conditioning of samples; temperature (°C)		N/A



IEC 60950-1			
Clause	Requirement + Test	Result - Remark	Verdict
A.2.3	Mounting of samples		N/A
A.2.4	Test flame (see IEC 60695-11-4)		N/A
	Flame A, B or C		—
A.2.5	Test procedure		N/A
A.2.6	Compliance criteria		N/A
	Sample 1 burning time (s)		—
	Sample 2 burning time (s)		—
	Sample 3 burning time (s)		—
A.2.7	Alternative test acc. to IEC 60695-11-5, cl. 5 and 9		N/A
	Sample 1 burning time (s)		—
	Sample 2 burning time (s)		—
	Sample 3 burning time (s)		—
A.3	Hot flaming oil test (see 4.6.2)		N/A
A.3.1	Mounting of samples		N/A
A.3.2	Test procedure		N/A
A.3.3	Compliance criterion		N/A
B	ANNEX B, MOTOR TESTS UNDER ABNORMAL CONDITIONS(see 4.7.2.2 and 5.3.2)		N/A
B.1	General requirements		N/A
	Position		—
	Manufacturer		—
	Type		—
	Rated values		—
B.2	Test conditions		N/A
B.3	Maximum temperatures		N/A
B.4	Running overload test		N/A
B.5	Locked-rotor overload test		N/A
	Test duration (days)		—
	Electric strength test: test voltage (V)		—
B.6	Running overload test for d.c. motors in secondary circuits		N/A
B.6.1	General		N/A



IEC 60950-1			
Clause	Requirement + Test	Result - Remark	Verdict
B.6.2	Test procedure		N/A
B.6.3	Alternative test procedure		N/A
B.6.4	Electric strength test; test voltage (V)		N/A
B.7	Locked-rotor overload test for d.c. motors in secondary circuits		N/A
B.7.1	General		N/A
B.7.2	Test procedure		N/A
B.7.3	Alternative test procedure		N/A
B.7.4	Electric strength test; test voltage (V)		N/A
B.8	Test for motors with capacitors		N/A
B.9	Test for three-phase motors		N/A
B.10	Test for series motors		N/A
	Operating voltage (V)		—

C	ANNEX C, TRANSFORMERS (see 1.5.4 and 5.3.3)		N/A
	Position		—
	Manufacturer		—
	Type		—
	Rated values		—
	Method of protection		—
C.1	Overload test		N/A
C.2	Insulation		N/A
	Protection from displacement of windings		N/A

D	ANNEX D, MEASURING INSTRUMENTS FOR TOUCH-CURRENT TESTS (see 5.1.4)		N/A
D.1	Measuring instrument		N/A
D.2	Alternative measuring instrument		N/A

E	ANNEX E, TEMPERATURE RISE OF A WINDING (see 1.4.13)		N/A
----------	--	--	-----

F	ANNEX F, MEASUREMENT OF CLEARANCES AND CREEPAGE DISTANCES (see 2.10 and Annex G)		N/A
----------	---	--	-----



IEC 60950-1			
Clause	Requirement + Test	Result - Remark	Verdict
G	ANNEX G, ALTERNATIVE METHOD FOR DETERMINING MINIMUM CLEARANCES		N/A
G.1	Clearances		N/A
G.1.1	General		N/A
G.1.2	Summary of the procedure for determining minimum clearances		N/A
G.2	Determination of mains transient voltage (V)		N/A
G.2.1	AC mains supply		N/A
G.2.2	Earthed d.c. mains supplies		N/A
G.2.3	Unearthed d.c. mains supplies		N/A
G.2.4	Battery operation		N/A
G.3	Determination of telecommunication network transient voltage (V)		N/A
G.4	Determination of required withstand voltage (V)		N/A
G.4.1	Mains transients and internal repetitive peaks		N/A
G.4.2	Transients from telecommunication networks		N/A
G.4.3	Combination of transients		N/A
G.4.4	Transients from cable distribution systems		N/A
G.5	Measurement of transient voltages (V)		N/A
	a) Transients from a mains supply		N/A
	For an a.c. mains supply		N/A
	For a d.c. mains supply		N/A
	b) Transients from a telecommunication network		N/A
G.6	Determination of minimum clearances		N/A
H	ANNEX H, IONIZING RADIATION (see 4.3.13)		N/A
J	ANNEX J, TABLE OF ELECTROCHEMICAL POTENTIALS (see 2.6.5.6)		N/A
	Metal(s) used		—
K	ANNEX K, THERMAL CONTROLS (see 1.5.3 and 5.3.8)		N/A
K.1	Making and breaking capacity		N/A
K.2	Thermostat reliability; operating voltage (V)		N/A



IEC 60950-1			
Clause	Requirement + Test	Result - Remark	Verdict
K.3	Thermostat endurance test; operating voltage (V)		N/A
K.4	Temperature limiter endurance; operating voltage (V)		N/A
K.5	Thermal cut-out reliability		N/A
K.6	Stability of operation		N/A
L	ANNEX L, NORMAL LOAD CONDITIONS FOR SOME TYPES OF ELECTRICAL BUSINESS EQUIPMENT (see 1.2.2.1 and 4.5.2)		P
L.1	Typewriters		N/A
L.2	Adding machines and cash registers		N/A
L.3	Erasers		N/A
L.4	Pencil sharpeners		N/A
L.5	Duplicators and copy machines		N/A
L.6	Motor-operated files		N/A
L.7	Other business equipment		P
M	ANNEX M, CRITERIA FOR TELEPHONE RINGING SIGNALS (see 2.3.1)		N/A
M.1	Introduction		N/A
M.2	Method A		N/A
M.3	Method B		N/A
M.3.1	Ringing signal		N/A
M.3.1.1	Frequency (Hz)		—
M.3.1.2	Voltage (V)		—
M.3.1.3	Cadence; time (s), voltage (V)		—
M.3.1.4	Single fault current (mA)		—
M.3.2	Tripping device and monitoring voltage		N/A
M.3.2.1	Conditions for use of a tripping device or a monitoring voltage		N/A
M.3.2.2	Tripping device		N/A
M.3.2.3	Monitoring voltage (V)		N/A
N	ANNEX N, IMPULSE TEST GENERATORS (see 1.5.7.2, 1.5.7.3, 2.10.3.9, 6.2.2.1, 7.3.2, 7.4.3 and Clause G.5)		N/A



IEC 60950-1			
Clause	Requirement + Test	Result - Remark	Verdict
N.1	ITU-T impulse test generators		N/A
N.2	IEC 60065 impulse test generator		N/A
P	ANNEX P, NORMATIVE REFERENCES		—
Q	ANNEX Q, Voltage dependent resistors (VDRs) (see 1.5.9.1)		N/A
	- Preferred climatic categories		N/A
	- Maximum continuous voltage		N/A
	- Combination pulse current		N/A
	Body of the VDR Test according to IEC60695-11-5.....		N/A
	Body of the VDR. Flammability class of material (min V-1).....		N/A
R	ANNEX R, EXAMPLES OF REQUIREMENTS FOR QUALITY CONTROL PROGRAMMES		N/A
R.1	Minimum separation distances for unpopulated coated printed boards (see 2.10.6.2)		N/A
R.2	Reduced clearances (see 2.10.3)		N/A
S	ANNEX S, PROCEDURE FOR IMPULSE TESTING (see 6.2.2.3)		N/A
S.1	Test equipment		N/A
S.2	Test procedure		N/A
S.3	Examples of waveforms during impulse testing		N/A
T	ANNEX T, GUIDANCE ON PROTECTION AGAINST INGRESS OF WATER (see 1.1.2)		N/A
			—
U	ANNEX U, INSULATED WINDING WIRES FOR USE WITHOUT INTERLEAVED INSULATION (see 2.10.5.4)		N/A
			—



IEC 60950-1			
Clause	Requirement + Test	Result - Remark	Verdict
V	ANNEX V, AC POWER DISTRIBUTION SYSTEMS (see 1.6.1)		N/A
V.1	Introduction		N/A
V.2	TN power distribution systems		N/A
W	ANNEX W, SUMMATION OF TOUCH CURRENTS		N/A
W.1	Touch current from electronic circuits		N/A
W.1.1	Floating circuits		N/A
W.1.2	Earthed circuits		N/A
W.2	Interconnection of several equipments		N/A
W.2.1	Isolation		N/A
W.2.2	Common return, isolated from earth		N/A
W.2.3	Common return, connected to protective earth		N/A
X	ANNEX X, MAXIMUM HEATING EFFECT IN TRANSFORMER TESTS (see clause C.1)		N/A
X.1	Determination of maximum input current		N/A
X.2	Overload test procedure		N/A
Y	ANNEX Y, ULTRAVIOLET LIGHT CONDITIONING TEST (see 4.3.13.3)		N/A
Y.1	Test apparatus		N/A
Y.2	Mounting of test samples		N/A
Y.3	Carbon-arc light-exposure apparatus		N/A
Y.4	Xenon-arc light exposure apparatus		N/A
Z	ANNEX Z, OVERVOLTAGE CATEGORIES (see 2.10.3.2 and Clause G.2)		N/A
AA	ANNEX AA, MANDREL TEST (see 2.10.5.8)		N/A
BB	ANNEX BB, CHANGES IN THE SECOND EDITION		—
CC	ANNEX CC, Evaluation of integrated circuit (IC) current limiters		N/A
CC.1	General		N/A
CC.2	Test program 1.....		N/A



IEC 60950-1			
Clause	Requirement + Test	Result - Remark	Verdict
CC.3	Test program 2.....:		N/A
CC.4	Test program 3.....:		N/A
CC.5	Compliance.....:		N/A

DD	ANNEX DD, Requirements for the mounting means of rack-mounted equipment		N/A
DD.1	General		N/A
DD.2	Mechanical strength test, variable N.....:		N/A
DD.3	Mechanical strength test, 250N, including end stops.....:		N/A
DD.4	Compliance.....:		N/A

EE	ANNEX EE, Household and home/office document/media shredders		N/A
EE.1	General		N/A
EE.2	Markings and instructions		N/A
	Use of markings or symbols.....:		N/A
	Information of user instructions, maintenance and/or servicing instructions.....:		N/A
EE.3	Inadvertent reactivation test.....:		N/A
EE.4	Disconnection of power to hazardous moving parts:		N/A
	Use of markings or symbols.....:		N/A
EE.5	Protection against hazardous moving parts		N/A
	Test with test finger (Figure 2A)		N/A
	Test with wedge probe (Figure EE1 and EE2)		N/A



IEC 60950-1			
Clause	Requirement + Test	Result - Remark	Verdict

EN 60950-1:2006/A11:2009/A1:2010/A12:2011/A2:2013 – CENELEC COMMON MODIFICATIONS			
Contents	Add the following annexes:		P
(A2:2013)	Annex ZA (normative)	Normative references to international publications with their corresponding European publications	
	Annex ZB (normative)	Special national conditions	
	Annex ZD (informative)	IEC and CENELEC code designations for flexible cords	
General	Delete all the "country" notes in the reference document (IEC 60950-1:2005) according to the following list:		P
	1.4.8 Note 2	1.5.1 Note 2 & 3	1.5.7.1 Note
	1.5.8 Note 2	1.5.9.4 Note	1.7.2.1 Note 4, 5 & 6
	2.2.3 Note	2.2.4 Note	2.3.2 Note
	2.3.2.1 Note 2	2.3.4 Note 2	2.6.3.3 Note 2 & 3
	2.7.1 Note	2.10.3.2 Note 2	2.10.5.13 Note 3
	3.2.1.1 Note	3.2.4 Note 3.	2.5.1 Note 2
	4.3.6 Note 1 & 2	4.7 Note 4	4.7.2.2 Note
	4.7.3.1 Note 2	5.1.7.1 Note 3 & 4	5.3.7 Note 1
	6 Note 2 & 5	6.1.2.1 Note 2	6.1.2.2 Note
	6.2.2 Note	6.2.2.1 Note 2	6.2.2.2 Note
	7.1 Note 3	7.2 Note	7.3 Note 1 & 2
	G.2.1 Note 2	Annex H Note 2	
General (A1:2010)	Delete all the "country" notes in the reference document (IEC 60950-1:2005/A1:2010) according to the following list:		P
	1.5.7.1 Note	6.1.2.1 Note 2	
	6.2.2.1 Note 2	EE.3 Note	
General (A2:2013)	Delete all the "country" notes in the reference document (IEC 60950-1:2005/A2:2013) according to the following list:		P
	2.7.1 Note *	2.10.3.1 Note 2	
	6.2.2. Note		
	* Note of secretary: Text of Common Modification remains unchanged.		
1.1.1 (A1:2010)	Replace the text of NOTE 3 by the following. NOTE 3 The requirements of EN 60065 may also be used to meet safety requirements for multimedia equipment. See IEC Guide 112, Guide on the safety of multimedia equipment. For television sets EN 60065 applies.		N/A



IEC 60950-1			
Clause	Requirement + Test	Result - Remark	Verdict
1.3.Z1	<p>Add the following subclause:</p> <p>1.3.Z1 Exposure to excessive sound pressure</p> <p>The apparatus shall be so designed and constructed as to present no danger when used for its intended purpose, either in normal operating conditions or under fault conditions, particularly providing protection against exposure to excessive sound pressures from headphones or earphones.</p> <p>NOTE Z1 A new method of measurement is described in EN 50332-1, Sound system equipment: Headphones and earphones associated with portable audio equipment - Maximum sound pressure level measurement methodology and limit considerations - Part 1: General method for "one package equipment", and in EN 50332-2, Sound system equipment: Headphones and earphones associated with portable audio equipment - Maximum sound pressure level measurement methodology and limit considerations - Part 2: Guidelines to associate sets with headphones coming from different manufacturers.</p>		N/A
(A12:2011)	<p>In EN 60950-1:2006/A12:2011</p> <p>Delete the addition of 1.3.Z1 / EN 60950-1:2006</p> <p>Delete the definition 1.2.3.Z1 / EN 60950-1:2006 /A1:2010</p>		P
1.5.1 (Added info*)	<p>Add the following NOTE:</p> <p>NOTE Z1 The use of certain substances in electrical and electronic equipment is restricted within the EU: see Directive 2002/95/EC.</p> <p>New Directive 2011/65/11 *</p>		P
1.7.2.1 (A1:2010)	<p>In addition, for a PORTABLE SOUND SYSTEM, the instructions shall include a warning that excessive sound pressure from earphones and headphones can cause hearing loss.</p>		N/A
1.7.2.1 (A12:2011)	<p>In EN 60950-1:2006/A12:2011</p> <p>Delete NOTE Z1 and the addition for Portable Sound System.</p> <p>Add the following clause and annex to the existing standard and amendments.</p>		N/A
	Zx Protection against excessive sound pressure from personal music players		N/A



IEC 60950-1			
Clause	Requirement + Test	Result - Remark	Verdict
	<p>Zx.1 General</p> <p>This sub-clause specifies requirements for protection against excessive sound pressure from personal music players that are closely coupled to the ear. It also specifies requirements for earphones and headphones intended for use with personal music players.</p> <p>A personal music player is a portable equipment for personal use, that:</p> <ul style="list-style-type: none"> – is designed to allow the user to listen to recorded or broadcast sound or video; and – primarily uses headphones or earphones that can be worn in or on or around the ears; and – allows the user to walk around while in use. <p>NOTE 1 Examples are hand-held or body-worn portable CD players, MP3 audio players, mobile phones with MP3 type features, PDA's or similar equipment.</p> <p>A personal music player and earphones or headphones intended to be used with personal music players shall comply with the requirements of this sub-clause.</p> <p>The requirements in this sub-clause are valid for music or video mode only.</p> <p>The requirements do not apply:</p> <ul style="list-style-type: none"> – while the personal music player is connected to an external amplifier; or – while the headphones or earphones are not used. <p>NOTE 2 An external amplifier is an amplifier which is not part of the personal music player or the listening device, but which is intended to play the music as a standalone music player.</p> <p>The requirements do not apply to:</p> <ul style="list-style-type: none"> – hearing aid equipment and professional equipment; <p>NOTE 3 Professional equipment is equipment sold through special sales channels. All products sold through normal electronics stores are considered not to be professional equipment.</p>		N/A




IEC 60950-1			
Clause	Requirement + Test	Result - Remark	Verdict
	<p>– analogue personal music players (personal music players without any kind of digital processing of the sound signal) that are brought to the market before the end of 2015.</p> <p>NOTE 4 This exemption has been allowed because this technology is falling out of use and it is expected that within a few years it will no longer exist. This exemption will not be extended to other technologies.</p> <p>For equipment which is clearly designed or intended for use by young children, the limits of EN 71-1 apply.</p>		N/A
	<p>Zx.2 Equipment requirements</p> <p>No safety provision is required for equipment that complies with the following:</p> <p>– equipment provided as a package (personal music player with its listening device), where the acoustic output $L_{Aeq,T}$ is ≤ 85 dBA measured while playing the fixed “programme simulation noise” as described in EN 50332-1; and</p> <p>– a personal music player provided with an analogue electrical output socket for a listening device, where the electrical output is ≤ 27 mV measured as described in EN 50332-2, while playing the fixed “programme simulation noise” as described in EN 50332-1.</p> <p>NOTE 1 Wherever the term acoustic output is used in this clause, the 30 s A-weighted equivalent sound pressure level $L_{Aeq,T}$ is meant. See also Zx.5 and Annex Zx.</p> <p>All other equipment shall:</p> <p>a) protect the user from unintentional acoustic outputs exceeding those mentioned above; and</p> <p>b) have a standard acoustic output level not exceeding those mentioned above, and automatically return to an output level not exceeding those mentioned above when the power is switched off; and</p>		N/A



IEC 60950-1			
Clause	Requirement + Test	Result - Remark	Verdict
	<p>c) provide a means to actively inform the user of the increased sound pressure when the equipment is operated with an acoustic output exceeding those mentioned above. Any means used shall be acknowledged by the user before activating a mode of operation which allows for an acoustic output exceeding those mentioned above. The acknowledgement does not need to be repeated more than once every 20 h of cumulative listening time; and</p> <p>NOTE 2 Examples of means include visual or audible signals. Action from the user is always required.</p> <p>NOTE 3 The 20 h listening time is the accumulative listening time, independent how often and how long the personal music player has been switched off.</p> <p>d) have a warning as specified in Zx.3; and</p> <p>e) not exceed the following:</p> <ol style="list-style-type: none"> 1) equipment provided as a package (player with its listening device), the acoustic output shall be ≤ 100 dBA measured while playing the fixed "programme simulation noise" described in EN 50332-1; and 2) a personal music player provided with an analogue electrical output socket for a listening device, the electrical output shall be ≤ 150 mV measured as described in EN 50332-2, while playing the fixed "programme simulation noise" described in EN 50332-1. <p>For music where the average sound pressure (long term $L_{Aeq,T}$) measured over the duration of the song is lower than the average produced by the programme simulation noise, the warning does not need to be given as long as the average sound pressure of the song is below the basic limit of 85 dBA. In this case T becomes the duration of the song.</p> <p>NOTE 4 Classical music typically has an average sound pressure (long term $L_{Aeq,T}$) which is much lower than the average programme simulation noise. Therefore, if the player is capable to analyse the song and compare it with the programme simulation noise, the warning does not need to be given as long as the average sound pressure of the song is below the basic limit of 85 dBA.</p> <p>For example, if the player is set with the programme simulation noise to 85 dBA, but the average music level of the song is only 65 dBA, there is no need to give a warning or ask an acknowledgement as long as the average sound level of the song is not above the basic limit of 85 dBA.</p>		N/A



IEC 60950-1			
Clause	Requirement + Test	Result - Remark	Verdict
	<p>Zx.3 Warning The warning shall be placed on the equipment, or on the packaging, or in the instruction manual and shall consist of the following:</p> <ul style="list-style-type: none"> – the symbol of Figure 1 with a minimum height of 5 mm; and – the following wording, or similar: <p>“To prevent possible hearing damage, do not listen at high volume levels for long periods.”</p>  <p>Figure 1 – Warning label (IEC 60417-6044)</p> <p>Alternatively, the entire warning may be given through the equipment display during use, when the user is asked to acknowledge activation of the higher level.</p>		N/A
	Zx.4 Requirements for listening devices (headphones and earphones)		N/A
	<p>Zx.4.1 Wired listening devices with analogue input With 94 dBA sound pressure output $L_{Aeq,T}$, the input voltage of the fixed “programme simulation noise” described in EN 50332-2 shall be ≥ 75 mV.</p> <p>This requirement is applicable in any mode where the headphones can operate (active or passive), including any available setting (for example built-in volume level control).</p> <p>NOTE The values of 94 dBA – 75 mV correspond with 85dBA – 27 mV and 100 dBA – 150 mV.</p>		N/A



IEC 60950-1			
Clause	Requirement + Test	Result - Remark	Verdict
	<p>Zx.4.2 Wired listening devices with digital input With any playing device playing the fixed “programme simulation noise” described in EN 50332-1 (and respecting the digital interface standards, where a digital interface standard exists that specifies the equivalent acoustic level), the acoustic output $L_{Aeq,T}$ of the listening device shall be ≤ 100 dBA.</p> <p>This requirement is applicable in any mode where the headphones can operate, including any available setting (for example built-in volume level control, additional sound feature like equalization, etc.).</p> <p>NOTE An example of a wired listening device with digital input is a USB headphone.</p>		N/A
	<p>Zx.4.3 Wireless listening devices In wireless mode:</p> <ul style="list-style-type: none"> – with any playing and transmitting device playing the fixed programme simulation noise described in EN 50332-1; and – respecting the wireless transmission standards, where an air interface standard exists that specifies the equivalent acoustic level; and – with volume and sound settings in the listening device (for example built-in volume level control, additional sound feature like equalization, etc.) set to the combination of positions that maximize the measured acoustic output for the abovementioned programme simulation noise, the acoustic output $L_{Aeq,T}$ of the listening device shall be ≤ 100 dBA. <p>NOTE An example of a wireless listening device is a Bluetooth headphone.</p>		N/A
	<p>Zx.5 Measurement methods Measurements shall be made in accordance with EN 50332-1 or EN 50332-2 as applicable. Unless stated otherwise, the time interval T shall be 30 s.</p> <p>NOTE Test method for wireless equipment provided without listening device should be defined.</p>		N/A



IEC 60950-1			
Clause	Requirement + Test	Result - Remark	Verdict
2.7.1	<p>Replace the subclause as follows:</p> <p>Basic requirements</p> <p>To protect against excessive current, short-circuits and earth faults in PRIMARY CIRCUITS, protective devices shall be included either as integral parts of the equipment or as parts of the building installation, subject to the following, a), b) and c):</p> <p>a) except as detailed in b) and c), protective devices necessary to comply with the requirements of 5.3 shall be included as parts of the equipment;</p> <p>b) for components in series with the mains input to the equipment such as the supply cord, appliance coupler, r.f.i. filter and switch, short-circuit and earth fault protection may be provided by protective devices in the building installation;</p>		N/A
	<p>c) it is permitted for PLUGGABLE EQUIPMENT TYPE B or PERMANENTLY CONNECTED EQUIPMENT, to rely on dedicated overcurrent and short-circuit protection in the building installation, provided that the means of protection, e.g. fuses or circuit breakers, is fully specified in the installation instructions.</p> <p>If reliance is placed on protection in the building installation, the installation instructions shall so state, except that for PLUGGABLE EQUIPMENT TYPE A the building installation shall be regarded as providing protection in accordance with the rating of the wall socket outlet.</p>		N/A
2.7.2	This subclause has been declared 'void'.		N/A
3.2.3	Delete the NOTE in Table 3A, and delete also in this table the conduit sizes in parentheses.		N/A



IEC 60950-1									
Clause	Requirement + Test	Result - Remark	Verdict						
3.2.5.1	<p>Replace “60245 IEC 53” by “H05 RR-F”; “60227 IEC 52” by “H03 VV-F or H03 VVH2-F”; “60227 IEC 53” by “H05 VV-F or H05 VVH2-F2”.</p> <p>In Table 3B, replace the first four lines by the following:</p> <table><tr><td>Up to and including 6 </td><td>0,75 ^{a)} </td></tr><tr><td>Over 6 up to and including 10 (0,75) ^{b)}</td><td>1,0 </td></tr><tr><td>Over 10 up to and including 16 (1,0) ^{c)}</td><td>1,5 </td></tr></table> <p>In the conditions applicable to Table 3B delete the words “in some countries” in condition ^{a)}.</p> <p>In NOTE 1, applicable to Table 3B, delete the second sentence.</p>	Up to and including 6	0,75 ^{a)}	Over 6 up to and including 10 (0,75) ^{b)}	1,0	Over 10 up to and including 16 (1,0) ^{c)}	1,5		N/A
Up to and including 6	0,75 ^{a)}								
Over 6 up to and including 10 (0,75) ^{b)}	1,0								
Over 10 up to and including 16 (1,0) ^{c)}	1,5								
3.2.5.1 (A2:2013)	NOTE Z1 The harmonised code designations corresponding to the IEC cord types are given in Annex ZD		N/A						
3.3.4	<p>In Table 3D, delete the fourth line: conductor sizes for 10 to 13 A, and replace with the following:</p> <p>Over 10 up to and including 16 1,5 to 2,5 1,5 to 4 </p> <p>Delete the fifth line: conductor sizes for 13 to 16 A</p>		N/A						
4.3.13.6 (A1:2010)	<p>Replace the existing NOTE by the following:</p> <p>NOTE Z1 Attention is drawn to:</p> <p>1999/519/EC: Council Recommendation on the limitation of exposure of the general public to electromagnetic fields 0 Hz to 300 GHz, and</p> <p>2006/25/EC: Directive on the minimum health and safety requirements regarding the exposure of workers to risks arising from physical agents (artificial optical radiation).</p>		N/A						
	Standards taking into account mentioned Recommendation and Directive which demonstrate compliance with the applicable EU Directive are indicated in the OJEC.		N/A						
Annex H	<p>Replace the last paragraph of this annex by:</p> <p>At any point 10 cm from the surface of the OPERATOR ACCESS AREA, the dose rate shall not exceed 1 µSv/h (0,1 mR/h) (see NOTE). Account is taken of the background level.</p> <p>Replace the notes as follows:</p> <p>NOTE These values appear in Directive 96/29/Euratom.</p> <p>Delete NOTE 2.</p>		N/A						
Bibliography	Additional EN standards.		—						



IEC 60950-1			
Clause	Requirement + Test	Result - Remark	Verdict

ZA	NORMATIVE REFERENCES TO INTERNATIONAL PUBLICATIONS WITH THEIR CORRESPONDING EUROPEAN PUBLICATIONS	—
-----------	--	---

ZB ANNEX (normative) SPECIAL NATIONAL CONDITIONS (EN)			
1.2.4.1	In Denmark , certain types of Class I appliances (see 3.2.1.1) may be provided with a plug not establishing earthing conditions when inserted into Danish socket-outlets.		N/A
1.2.13.14 (A11:2009)	In Norway and Sweden , for requirements see 1.7.2.1 and 7.3 of this annex.		N/A
1.5.7.1 (A11:2009)	In Finland , Norway and Sweden , resistors bridging BASIC INSULATION in CLASS I PLUGGABLE EQUIPMENT TYPE A must comply with the requirements in 1.5.7.1. In addition when a single resistor is used, the resistor must withstand the resistor test in 1.5.7.2.		N/A
1.5.8	In Norway , due to the IT power system used (see annex V, Figure V.7), capacitors are required to be rated for the applicable line-to-line voltage (230 V).		N/A
1.5.9.4	In Finland , Norway and Sweden , the third dashed sentence is applicable only to equipment as defined in 6.1.2.2 of this annex.		N/A



IEC 60950-1			
Clause	Requirement + Test	Result - Remark	Verdict
ZB ANNEX (normative) SPECIAL NATIONAL CONDITIONS (EN)			
1.7.2.1	<p>In Finland, Norway and Sweden, CLASS I PLUGGABLE EQUIPMENT TYPE A intended for connection to other equipment or a network shall, if safety relies on connection to protective earth or if surge suppressors are connected between the network terminals and accessible parts, have a marking stating that the equipment must be connected to an earthed mains socket-outlet.</p> <p>The marking text in the applicable countries shall be as follows:</p> <p>In Finland: "Laite on liitettävä suojakoskettimilla varustettuun pistorasiaan"</p> <p>In Norway: "Apparatet må tilkoples jordet stikkontakt"</p> <p>In Sweden: "Apparaten skall anslutas till jordat uttag"</p>		N/A
1.7.2.1 (A11:2009)	<p>In Norway and Sweden, the screen of the cable distribution system is normally not earthed at the entrance of the building and there is normally no equipotential bonding system within the building. Therefore the protective earthing of the building installation need to be isolated from the screen of a cable distribution system.</p> <p>It is however accepted to provide the insulation external to the equipment by an adapter or an interconnection cable with galvanic isolator, which may be provided by e.g. a retailer.</p> <p>The user manual shall then have the following or similar information in Norwegian and Swedish language respectively, depending on in what country the equipment is intended to be used in:</p> <p>"Equipment connected to the protective earthing of the building installation through the mains connection or through other equipment with a connection to protective earthing – and to a cable distribution system using coaxial cable, may in some circumstances create a fire hazard. Connection to a cable distribution system has therefore to be provided through a device providing electrical isolation below a certain frequency range (galvanic isolator, see EN 60728-11)."</p>		



IEC 60950-1			
Clause	Requirement + Test	Result - Remark	Verdict
ZB ANNEX (normative) SPECIAL NATIONAL CONDITIONS (EN)			
	<p>NOTE In Norway, due to regulation for installations of cable distribution systems, and in Sweden, a galvanic isolator shall provide electrical insulation below 5 MHz. The insulation shall withstand a dielectric strength of 1,5 kV r.m.s., 50 Hz or 60 Hz, for 1 min.</p> <p>Translation to Norwegian (the Swedish text will also be accepted in Norway):</p> <p>“Utstyr som er koplet til beskyttelsesjord via nettplugg og/eller via annet jordtilkoplet utstyr – og er tilkoplet et kabel-TV nett, kan forårsake brannfare. For å unngå dette skal det ved tilkopling av utstyret til kabel-TV nettet installeres en galvanisk isolator mellom utstyret og kabel-TV nettet.”</p> <p>Translation to Swedish:</p> <p>”Utrustning som är kopplad till skyddsjord via jordat vägguttag och/eller via annan utrustning och samtidigt är kopplad till kabel-TV nät kan i vissa fall medföra risk för brand. För att undvika detta skall vid anslutning av utrustningen till kabel-TV nät galvanisk isolator finnas mellan utrustningen och kabel-TV nätet.”</p>		N/A
1.7.2.1 (A2:2013)	<p>In Denmark, CLASS I PLUGGABLE EQUIPMENT TYPE A intended for connection to other equipment or a network shall, if safety relies on connection to protective earth or if surge suppressors are connected between the network terminals and accessible parts, have a marking stating that the equipment must be connected to an earthed mains socket-outlet.</p> <p>The marking text in Denmark shall be as follows: In Denmark: “Apparatets stikprop skal tilsluttes en stikkontakt med jord, som giver forbindelse til stikproppens jord.”</p>		N/A
1.7.5 1.7.5 (A11:2009)	<p>In Denmark, socket-outlets for providing power to other equipment shall be in accordance with the Heavy Current Regulations, Section 107-2-D1, Standard Sheet DK 1-3a, DK 1-5a or DK 1-7a, when used on Class I equipment. For STATIONARY EQUIPMENT the socket-outlet shall be in accordance with Standard Sheet DK 1-1b or DK 1-5a.</p> <p>For CLASS II EQUIPMENT the socket outlet shall be in accordance with Standard Sheet DKA 1-4a.</p>		N/A



IEC 60950-1			
Clause	Requirement + Test	Result - Remark	Verdict
ZB ANNEX (normative) SPECIAL NATIONAL CONDITIONS (EN)			
1.7.5 (A2:2013)	<p>In Denmark, socket-outlets for providing power to other equipment shall be in accordance with the DS 60884-2-D1:2011.</p> <p>For class I equipment the following Standard Sheets are applicable: DK 1-3a, DK 1-1c, DK 1-1d, DK 1-5a or DK 1-7a, with the exception for STATIONARY EQUIPMENT where the socket-outlets shall be in accordance with Standard Sheet DK 1-1b, DK 1-1c, DK 1-1d or DK 1-5a.</p> <p>Socket outlets intended for providing power to Class II apparatus with a rated current of 2,5 A shall be in accordance with DS 60884-2-D1 standard sheet DKA 1-4a. Other current rating socket outlets shall be in compliance with by DS 60884-2-D1 Standard Sheet DKA 1-3a or DKA 1-3b.</p> <p>Justification the Heavy Current Regulations, 6c</p>		N/A
2.2.4	In Norway , for requirements see 1.7.2.1, 6.1.2.1 and 6.1.2.2 of this annex.		N/A
2.3.2	In Finland, Norway and Sweden there are additional requirements for the insulation. See 6.1.2.1 and 6.1.2.2 of this annex.		N/A
2.3.4	In Norway , for requirements see 1.7.2.1, 6.1.2.1 and 6.1.2.2 of this annex.		N/A
2.6.3.3	In the United Kingdom , the current rating of the circuit shall be taken as 13 A, not 16 A.		N/A
2.7.1	In the United Kingdom , to protect against excessive currents and short-circuits in the PRIMARY CIRCUIT of DIRECT PLUG-IN EQUIPMENT, tests according to 5.3 shall be conducted, using an external protective device rated 30 A or 32 A. If these tests fail, suitable protective devices shall be included as integral parts of the DIRECT PLUG-IN EQUIPMENT, so that the requirements of 5.3 are met.		N/A
2.10.5.13	In Finland, Norway and Sweden , there are additional requirements for the insulation, see 6.1.2.1 and 6.1.2.2 of this annex.		N/A
3.2.1.1	<p>In Switzerland, supply cords of equipment having a RATED CURRENT not exceeding 10 A shall be provided with a plug complying with SEV 1011 or IEC 60884-1 and one of the following dimension sheets:</p> <p>SEV 6532-2.1991 Plug Type 15 3P+N+PE 250/400 V, 10 A</p>		N/A



IEC 60950-1			
Clause	Requirement + Test	Result - Remark	Verdict
ZB ANNEX (normative) SPECIAL NATIONAL CONDITIONS (EN)			
	<p>SEV 6533-2.1991 Plug Type 11 L+N 250 V, 10 A</p> <p>SEV 6534-2.1991 Plug Type 12 L+N+PE 250 V, 10 A</p> <p>In general, EN 60309 applies for plugs for currents exceeding 10 A. However, a 16 A plug and socket-outlet system is being introduced in Switzerland, the plugs of which are according to the following dimension sheets, published in February 1998:</p> <p>SEV 5932-2.1998: Plug Type 25 , 3L+N+PE 230/400 V, 16 A</p> <p>SEV 5933-2.1998: Plug Type 21, L+N, 250 V, 16A</p> <p>SEV 5934-2.1998: Plug Type 23, L+N+PE .250 V, 16 A</p>		N/A
3.2.1.1	<p>In Denmark, supply cords of single-phase equipment having a rated current not exceeding 13 A shall be provided with a plug according to the Heavy Current Regulations, Section 107-2-D1.</p> <p>CLASS I EQUIPMENT provided with socket-outlets with earth contacts or which are intended to be used in locations where protection against indirect contact is required according to the wiring rules shall be provided with a plug in accordance with standard sheet DK 2-1a or DK 2-5a.</p> <p>If poly-phase equipment and single-phase equipment having a RATED CURRENT exceeding 13 A is provided with a supply cord with a plug, this plug shall be in accordance with the Heavy Current Regulations, Section 107-2-D1 or EN 60309-2.</p>		N/A



IEC 60950-1			
Clause	Requirement + Test	Result - Remark	Verdict
ZB ANNEX (normative) SPECIAL NATIONAL CONDITIONS (EN)			
3.2.1.1 (A2:2013)	<p>In Denmark, supply cords of single-phase equipment having a rated current not exceeding 13 A shall be provided with a plug according to DS 60884-2-D1.</p> <p>CLASS I EQUIPMENT provided with socket-outlets with earth contacts or which are intended to be used in locations where protection against indirect contact is required according to the wiring rules shall be provided with a plug in accordance with standard sheet DK 2-1a or DK 2-5a.</p> <p>If a single-phase equipment having a RATED CURRENT exceeding 13 A or if a poly-phase equipment is provided with a supply cord with a plug, this plug shall be in accordance with the standard sheets DK 6-1a in DS 60884-2-D1 or EN 60309-2.</p> <p>Justification the Heavy Current Regulations, 6c</p>		N/A
3.2.1.1	<p>In Spain, supply cords of single-phase equipment having a rated current not exceeding 10 A shall be provided with a plug according to UNE 20315:1994.</p> <p>Supply cords of single-phase equipment having a rated current not exceeding 2,5 A shall be provided with a plug according to UNE-EN 50075:1993.</p> <p>CLASS I EQUIPMENT provided with socket-outlets with earth contacts or which are intended to be used in locations where protection against indirect contact is required according to the wiring rules, shall be provided with a plug in accordance with standard UNE 20315:1994.</p> <p>If poly-phase equipment is provided with a supply cord with a plug, this plug shall be in accordance with UNE-EN 60309-2.</p>		N/A
3.2.1.1	<p>In the United Kingdom, apparatus which is fitted with a flexible cable or cord and is designed to be connected to a mains socket conforming to BS 1363 by means of that flexible cable or cord and plug, shall be fitted with a 'standard plug' in accordance with Statutory Instrument 1768:1994 - The Plugs and Sockets etc. (Safety) Regulations 1994, unless exempted by those regulations.</p> <p>NOTE 'Standard plug' is defined in SI 1768:1994 and essentially means an approved plug conforming to BS 1363 or an approved conversion plug.</p>		N/A



IEC 60950-1			
Clause	Requirement + Test	Result - Remark	Verdict
ZB ANNEX (normative) SPECIAL NATIONAL CONDITIONS (EN)			
3.2.1.1	In Ireland , apparatus which is fitted with a flexible cable or cord and is designed to be connected to a mains socket conforming to I.S. 411 by means of that flexible cable or cord and plug, shall be fitted with a 13 A plug in accordance with Statutory Instrument 525:1997 - National Standards Authority of Ireland (section 28) (13 A Plugs and Conversion Adaptors for Domestic Use) Regulations 1997.		N/A
3.2.4	In Switzerland , for requirements see 3.2.1.1 of this annex.		N/A
3.2.5.1	In the United Kingdom , a power supply cord with conductor of 1,25 mm ² is allowed for equipment with a rated current over 10 A and up to and including 13 A.		N/A
3.3.4	In the United Kingdom , the range of conductor sizes of flexible cords to be accepted by terminals for equipment with a RATED CURRENT of over 10 A up to and including 13 A is: • 1,25 mm ² to 1,5 mm ² nominal cross-sectional area.		N/A
4.3.6	In the United Kingdom , the torque test is performed using a socket outlet complying with BS 1363 part 1:1995, including Amendment 1:1997 and Amendment 2:2003 and the plug part of DIRECT PLUG-IN EQUIPMENT shall be assessed to BS 1363: Part 1, 12.1, 12.2, 12.3, 12.9, 12.11, 12.12, 12.13, 12.16 and 12.17, except that the test of 12.17 is performed at not less than 125 °C. Where the metal earth pin is replaced by an Insulated Shutter Opening Device (ISOD), the requirements of clauses 22.2 and 23 also apply.		N/A
4.3.6	In Ireland , DIRECT PLUG-IN EQUIPMENT is known as plug similar devices. Such devices shall comply with Statutory Instrument 526:1997 - National Standards Authority of Ireland (Section 28) (Electrical plugs, plug similar devices and sockets for domestic use) Regulations, 1997.		N/A



IEC 60950-1			
Clause	Requirement + Test	Result - Remark	Verdict
ZB ANNEX (normative) SPECIAL NATIONAL CONDITIONS (EN)			
5.1.7.1	<p>In Finland, Norway and Sweden TOUCH CURRENT measurement results exceeding 3,5 mA r.m.s. are permitted only for the following equipment:</p> <ul style="list-style-type: none"> • STATIONARY PLUGGABLE EQUIPMENT TYPE A that <ul style="list-style-type: none"> is intended to be used in a RESTRICTED ACCESS LOCATION where equipotential bonding has been applied, for example, in a telecommunication centre; and has provision for a permanently connected PROTECTIVE EARTHING CONDUCTOR; and is provided with instructions for the installation of that conductor by a SERVICE PERSON; • STATIONARY PLUGGABLE EQUIPMENT TYPE B; • STATIONARY PERMANENTLY CONNECTED EQUIPMENT. 		N/A



IEC 60950-1			
Clause	Requirement + Test	Result - Remark	Verdict
ZB ANNEX (normative) SPECIAL NATIONAL CONDITIONS (EN)			
6.1.2.1 (A1:2010)	<p>In Finland, Norway and Sweden, add the following text between the first and second paragraph of the compliance clause:</p> <p>If this insulation is solid, including insulation forming part of a component, it shall at least consist of either</p> <ul style="list-style-type: none"> - two layers of thin sheet material, each of which shall pass the electric strength test below, or - one layer having a distance through insulation of at least 0,4 mm, which shall pass the electric strength test below. <p>Alternatively for components, there is no distance through insulation requirements for the insulation consisting of an insulating compound completely filling the casing, so that CLEARANCES and CREEPAGE DISTANCES do not exist, if the component passes the electric strength test in accordance with the compliance clause below and in addition</p> <ul style="list-style-type: none"> - passes the tests and inspection criteria of 2.10.11 with an electric strength test of 1,5 kV multiplied by 1,6 (the electric strength test of 2.10.10 shall be performed using 1,5 kV), and - is subject to ROUTINE TESTING for electric strength during manufacturing, using a test voltage of 1,5 kV. 		N/A



IEC 60950-1			
Clause	Requirement + Test	Result - Remark	Verdict
ZB ANNEX (normative) SPECIAL NATIONAL CONDITIONS (EN)			
	<p>It is permitted to bridge this insulation with an optocoupler complying with 2.10.5.4 b).</p> <p>It is permitted to bridge this insulation with a capacitor complying with EN 60384-14:2005, subclass Y2.</p> <p>A capacitor classified Y3 according to EN 60384-14:2005, may bridge this insulation under the following conditions:</p> <ul style="list-style-type: none"> - the insulation requirements are satisfied by having a capacitor classified Y3 as defined by EN 60384-14, which in addition to the Y3 testing, is tested with an impulse test of 2,5 kV defined in EN 60950-1:2006, 6.2.2.1; - the additional testing shall be performed on all the test specimens as described in EN 60384-14: - the impulse test of 2,5 kV is to be performed before the endurance test in EN 60384-14, in the sequence of tests as described in EN 60384-14. 		N/A
6.1.2.2	<p>In Finland, Norway and Sweden, the exclusions are applicable for PERMANENTLY CONNECTED EQUIPMENT, PLUGGABLE EQUIPMENT TYPE B and equipment intended to be used in a RESTRICTED ACCESS LOCATION where equipotential bonding has been applied, e.g. in a telecommunication centre, and which has provision for a permanently connected PROTECTIVE EARTHING CONDUCTOR and is provided with instructions for the installation of that conductor by a SERVICE PERSON.</p>		N/A
7.2	<p>In Finland, Norway and Sweden, for requirements see 6.1.2.1 and 6.1.2.2 of this annex.</p> <p>The term TELECOMMUNICATION NETWORK in 6.1.2 being replaced by the term CABLE DISTRIBUTION SYSTEM.</p>		N/A
7.3 (A11:2009)	<p>In Norway and Sweden, for requirements see 1.2.13.14 and 1.7.2.1 of this annex.</p>		N/A

Annex ZD
(informative)



IEC 60950-1			
Clause	Requirement + Test	Result - Remark	Verdict

IEC and CENELEC code designations for flexible cords

Type of flexible cord	Code designations	
	IEC	CENELEC
PVC insulated cords		
Flat twin tinsel cord	60227 IEC 41	H03VH-Y
Light polyvinyl chloride sheathed flexible cord	60227 IEC 52	H03VV-F H03VVH2-F
Ordinary polyvinyl chloride sheathed flexible cord	60277 IEC 53	H05VV-F H05VVH2-F
Rubber insulated cords		
Braided cord	60245 IEC 51	H03RT-F
Ordinary tough rubber sheathed flexible cord	60245 IEC 53	H05RR-F
Ordinary polychloroprene sheathed flexible cord	60245 IEC 57	H05RN-F
Heavy polychloroprene sheathed flexible cord	60245 IEC 66	H07RN-F
Cords having high flexibility		
Rubber insulated and sheathed cord	60245 IEC 86	H03RR-H
Rubber insulated, crosslinked PVC sheathed cord	60245 IEC 87	H03RV4-H
Crosslinked PVC insulated and sheathed cord	60245 IEC 88	H03V4V4-H



1.5.1 TABLE: List of critical components						P
Object/part No.	Manufacturer/ trademark	Type/model	Technical data	Standard (Edition / year)	Mark(s) of conformity ¹⁾	
Metal enclosure	Interchangeable	Interchangeable	Metallic	--	--	
Adapter (optional)	Interchangeable	Interchangeable	O/P: 12Vdc, min. 0.5A, 60°C	EN 60950-1: 2006+A2	Approved by NCBs	
Adapter (optional)	Interchangeable	Interchangeable	O/P: POE: 48Vdc, min. 150mA, 60°C	EN 60950-1: 2006+A2	Approved by NCBs	
RTC Battery (BT1)	SEIKO INSTRUMENTS INC MICRO- ENERGY DIV	ML414H	Maximum charging voltage 3.4Vdc, maximum charging current 300mA.	UL 1642	UL (MH15628)	
PCB	SHENZHEN WUZHU TECH CO LTD	WZ-7	V-0, 130°C	UL 796, UL 94	UL (E170968)	
(Alternate)	SHENZHEN BEYOND SCI- TECH CO LTD	PC-001	V-0, 130°C	UL 796, UL 94	UL(E243002)	
(Alternate)	SHENZHEN BRIGHTPCB CO LTD	BR-DL-1	V-0, 130°C	UL 796, UL 94	UL(E331251)	
(Alternate)	APCB INC	77_1	V-0, 130°C	UL 796, UL 94	UL (E85792)	
(Alternate)	SHEN ZHEN SUN & LYNN CIRCUITS CO LTD	SL-M	V-0, 130°C	UL 796, UL 94	UL (E234156)	
(Alternate)	Interchangeable	Interchangeable	V-1 or better, 105°C	UL 796, UL 94	UL	
Supplementary information:						
¹⁾ Provided evidence ensures the agreed level of compliance. See OD-CB2039.						

1.6.2 TABLE: Electrical data (in normal conditions)							P
U (V)	I (A)	Irated (A)	P (W)	Fuse #	Ifuse (A)	Condition/status	
For model:DH-IPC-HDW4830EMP-AS							
12Vdc	0.250	0.50	3.000	--	--	Maximum normal load	
48Vdc	0.063	0.15	3.024	--	--	Maximum normal load	
For model:DH-IPC-HDW4231EMP-AS							
12Vdc	0.180	0.50	2.160	--	--	Maximum normal load	
48Vdc	0.052	0.15	2.496	--	--	Maximum normal load	



For model:DH-IPC-HDW4431EMP-AS						
12Vdc	0.220	0.50	2.640	--	--	Maximum normal load
48Vdc	0.058	0.15	2.784	--	--	Maximum normal load
Supplementary information: Unit operation normally, the lights were all bright.						

2.1.1.5 c) 1)	TABLE: max. V, A, VA test				P
Voltage (rated) (V)	Current (rated) (A)	Voltage (max.) (V)	Current (max.) (A)	VA (max.) (VA)	
supplementary information: Maximum input voltage: 48Vdc.					

2.1.1.5 c) 2)	TABLE: stored energy			N/A
Capacitance C (μF)		Voltage U (V)	Energy E (J)	
supplementary information:				

2.2	TABLE: evaluation of voltage limiting components in SELV circuits			P
Component (measured between)	max. voltage (V) (normal operation)		Voltage Limiting Components	
	V peak	V d.c.		
Fault test performed on voltage limiting components	Voltage measured (V) in SELV circuits (V peak or V d.c.)			
supplementary information:EUT is powered by a SELV secondary output from IEC 60950-1 Certified Power Source.				
No voltage limiting components in EUT, all circuits operate under the SELV limits.				

2.5	TABLE: limited power sources	P
Circuit output tested: see below		



Note: Measured Uoc (V) with all load circuits disconnected: see below						
Components	Sample No.	Uoc (V)	I _{sc} (A)		VA	
			Meas.	Limit	Meas.	Limit
J11(Pin 1-4: RJ45 Port, Pin 5, 6: GND, Pin 7, 8: +12V input, Pin 9, 10: POE GND, Pin11, 12: +48V input), Pin 1-4 to GND	1	0	0	8	0	100
supplementary information:						
Sc=Short circuit, Oc=Open circuit						

2.6.3.4	TABLE: Resistance of earthing measurement	N/A
Location	Resistance measured (mΩ)	Comments
Supplementary information:Class III equipment.		

2.10.2	Table: working voltage measurement			N/A
Location		RMS voltage (V)	Peak voltage (V)	Comments
supplementary information:				

2.10.3 and 2.10.4	TABLE: Clearance and creepage distance measurements						N/A
Clearance (cl) and creepage distance (cr) at/of/between:		U peak (V)	U r.m.s. (V)	Required cl (mm)	cl (mm)	Required cr (mm)	cr (mm)
Functional:							
Basic/supplementary:							
Reinforced:							
Supplementary information:							

2.10.5	TABLE: Distance through insulation measurements	N/A
---------------	--	-----



Distance through insulation (DTI) at/of:	U peak (V)	U rms (V)	Test voltage (V)	Required DTI (mm)	DTI (mm)
Supplementary information:					

4.3.8	TABLE: Batteries								P
The tests of 4.3.8 are applicable only when appropriate battery data is not available								P	
Is it possible to install the battery in a reverse polarity position?					No			P	
	Non-rechargeable batteries			Rechargeable batteries					
	Discharging		Un-intentional charging	Charging		Discharging		Reversed charging	
	Meas. current	Manuf. Specs.		Meas. current	Manuf. Specs.	Meas. current	Manuf. Specs.	Meas. current	Manuf. Specs.
Max. current during normal condition	--	--	--	0.95mA	300mA	1)	1)	--	--
Max. current during fault condition 1	--	--	--	1.3 mA	300mA	1)	1)	--	--
Max. current during fault condition 2	--	--	--	3.3mA	300mA	1)	1)	--	--
Max. current during fault condition 3	--	--	--	3.30 mA	300mA	1)	1)	--	--
Test results:								Verdict	
- Chemical leaks					--			P	
- Explosion of the battery					--			P	
- Emission of flame or expulsion of molten metal					--			P	



- Electric strength tests of equipment after completion of tests	--	P
Supplementary information:		
1) RTC battery is considered safe under short-circuiting conditions and therefore are not tested for discharge.		
2) Fault Condition 1: R239 shorted; Condition 2: R243 shorted; Condition 3: D3 pin2 to 1.		

4.3.8	TABLE: Batteries	P
Battery category: Lithium		
Manufacturer: See appended table 1.5.1		
Type / model.....: See appended table 1.5.1		
Voltage: See appended table 1.5.1		
Capacity: --		
Tested and Certified by (incl. Ref. No.): See appended table 1.5.1 and table 4.3.8		
Circuit protection diagram: See below.		

MARKINGS AND INSTRUCTIONS (1.7.13)	
Location of replaceable battery	In operator access areas
Language(s)	English
Close to the battery	N/A
In the servicing instructions	Provided.
In the operating instructions	Provided.

4.5	TABLE: Thermal requirements						P
	Supply voltage (V):	See below	See below	See below	See below	--	—
	Ambient T _{min} (°C):	--	--	--	--	--	—



	Ambient T _{max} (°C):			See below	See below	See below	See below	--	—
Maximum measured temperature T of part/at::				T (°C)					Allowed T _{max} (°C)
Supply voltage: 12Vdc				Ceiling mounted		Wall mounted		--	--
PCB near T1 (on main board)				44.8	78.8	43.3	77.8	--	105
PCB near U5 (on main board)				48.5	82.5	47.0	81.5	--	105
PCB near U1 (on main board)				49.0	83.0	50.7	85.2	--	105
PCB near U27 (on main board)				49.3	83.3	47.9	82.4	--	105
T1 body (on 61_042 board)				40.5	74.5	39.0	73.5	--	105
C5 body(on 61_042 board)				40.6	74.6	39.1	73.6	--	105
BT1 body (on main board)				50.3	84.3	49.5	84.0	--	100
Internal wire				36.8	70.8	36.4	70.9	--	80
Panel surface				34.0	68.0	34.0	68.5	--	80
Metal enclosure				33.0	67.0	33.5	68.0	--	90
Ambient				26.0	Shift to 60.0	25.5	Shift to 60.0	--	--
Supply voltage: 48Vdc				Ceiling mounted		Wall mounted		--	--
PCB near T1 (on main board)				47.6	81.4	47.6	81.5	--	105
PCB near U5 (on main board)				51.3	85.1	50.6	84.5	--	105
PCB near U1 (on main board)				52.1	85.9	52.0	85.9	--	105
PCB near U27 (on main board)				52.4	86.2	52.5	86.4	--	105
T1 body (on 61_042 board)				52.7	86.5	51.5	85.4	--	105
C5 body(on 61_042 board)				50.1	83.9	48.6	82.5	--	105
BT1 body (on main board)				53.2	87.0	53.0	86.9	--	100
Internal wire				38.5	72.3	38.6	72.5	--	80
Panel surface				35.4	69.2	35.7	69.6	--	80
Metal enclosure				33.7	67.5	33.8	67.7	--	70
Ambient				26.2	Shift to 60.0	26.1	Shift to 60.0	--	--
Supplementary information:									
Temperature T of winding:			t ₁ (°C)	R ₁ (Ω)	t ₂ (°C)	R ₂ (Ω)	T (°C)	Allowed T _{max} (°C)	Insulation class



Supplementary information:

1) The temperatures were measured under worst normal mode defined in 1.2.2.1 and as described in Sub-clause 1.6.2 and at voltages as described above.

2) The maximum ambient temperature permitted by the manufacturer's specification is 60°C.

3) The maximum permitted temperature rises are calculated as follows:

Components with:

- Plastic enclosure → T_{max} = 95°C

- PCB → T_{max} = 105°C

- Metal enclosure → T_{max} = 90°C



Symbol N°5041 of the IEC60417-2 is provided on Metal enclosure.

A temperature of 90°C is permitted for metal enclosure when equipment intended for installation in a restricted access location.

4.5.5	TABLE: Ball pressure test of thermoplastic parts			N/A
	Allowed impression diameter (mm)	≤ 2 mm		—
Part		Test temperature (°C)	Impression diameter (mm)	
Supplementary information:				

4.6.1, 4.6.2	Table: enclosure openings		N/A
Location	Size (mm)	Comments	
All sides	--	No openings	
Note(s):			

4.7	TABLE: Resistance to fire					P
Part	Manufacturer of material	Type of material	Thickness (mm)	Flammability class	Evidence	
PCB	1)	1)	1)	1)	P	
Supplementary information: 1) see appended table 1.5.1.						

5.1	TABLE: touch current measurement			N/A
Measured between:	Measured (mA)	Limit (mA)	Comments/conditions	
supplementary information:				

5.2	TABLE: Electric strength tests, impulse tests and voltage surge tests				N/A
------------	--	--	--	--	-----



Test voltage applied between:	Voltage shape (AC, DC, impulse, surge)	Test voltage (V)	Breakdo wn Yes / No
Functional:			
Basic/supplementary:			
Reinforced:			
Supplementary information: Class III equipment.			

5.3	TABLE: Fault condition tests					N/A
	Ambient temperature (°C) :					—
	Power source for EUT: Manufacturer, model/type, output rating :					—
Component No.	Fault	Supply voltage (V)	Test time	Fuse #	Fuse current (A)	Observation
Supplementary information:						



C.2	TABLE: transformers							N/A
Loc.	Tested insulation	Working voltage peak / V (2.10.2)	Working voltage rms / V (2.10.2)	Required electric strength (5.2)	Required clearance / mm (2.10.3)	Required creepage distance / mm (2.10.4)	Required distance thr. insul. (2.10.5)	
Loc.	Tested insulation			Test voltage/ V	Measured clearance / mm	Measured creepage dist./ mm	Measured distance thr. insul. / mm; number of layers	
supplementary information:								

C.2	TABLE: transformers	N/A



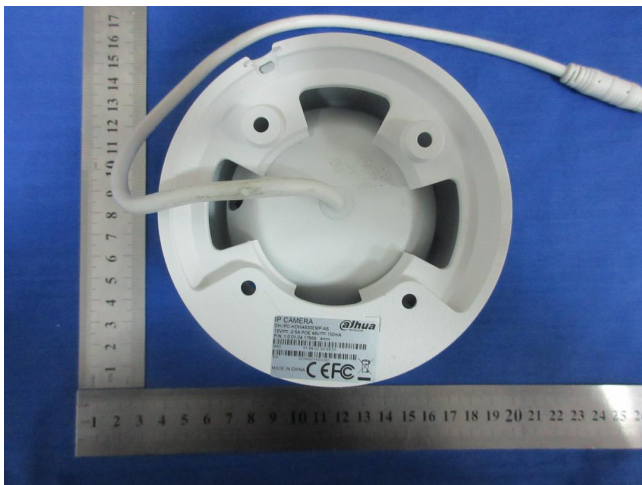
Photo(s)



Front View



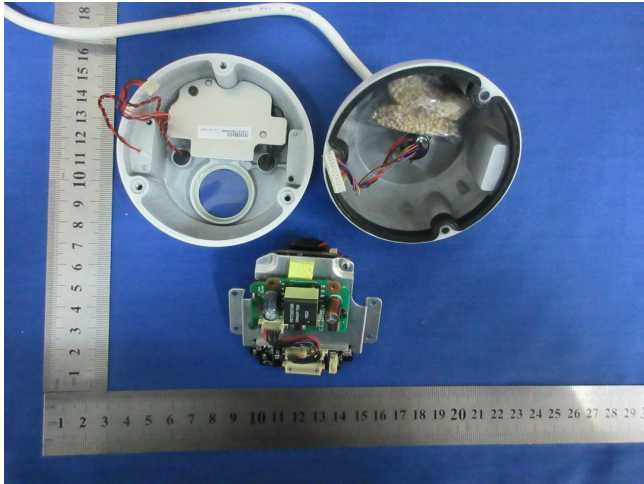
Rear View



Bottom View



Unit Partially Disassembled View



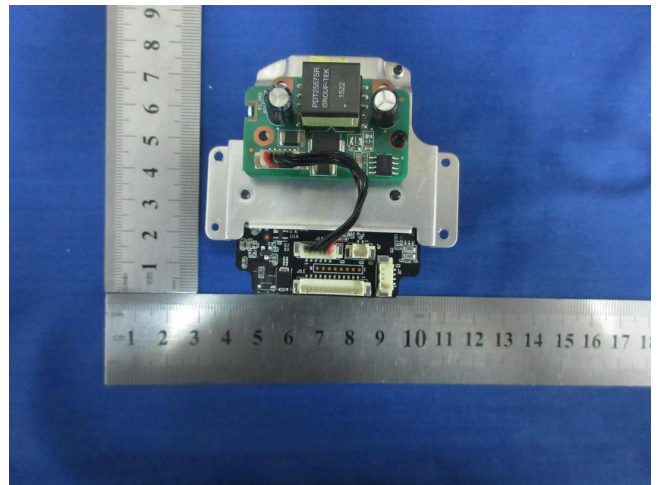
Unit Partially Disassembled View



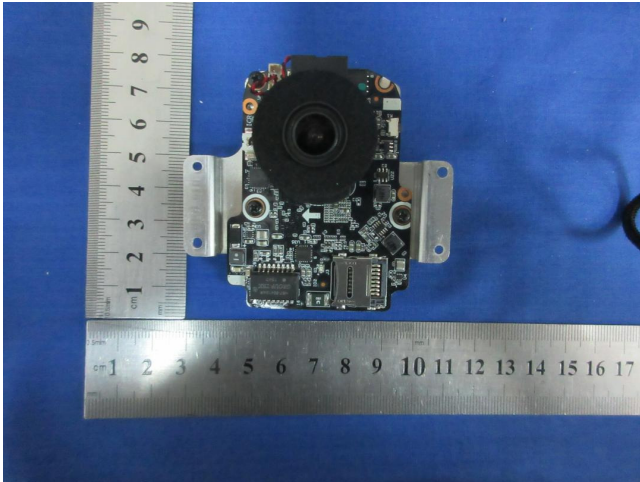
Unit Partially Disassembled View



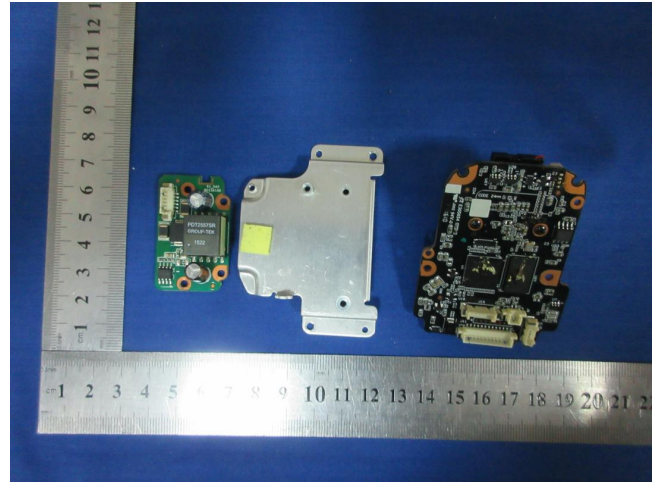
Unit Partially Disassembled View



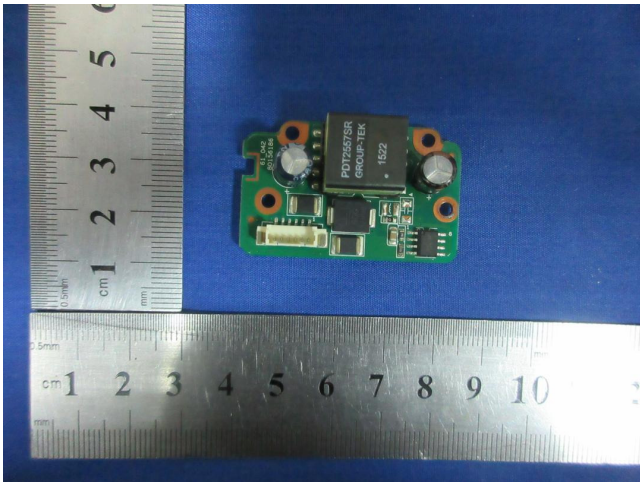
Unit Partially Disassembled View



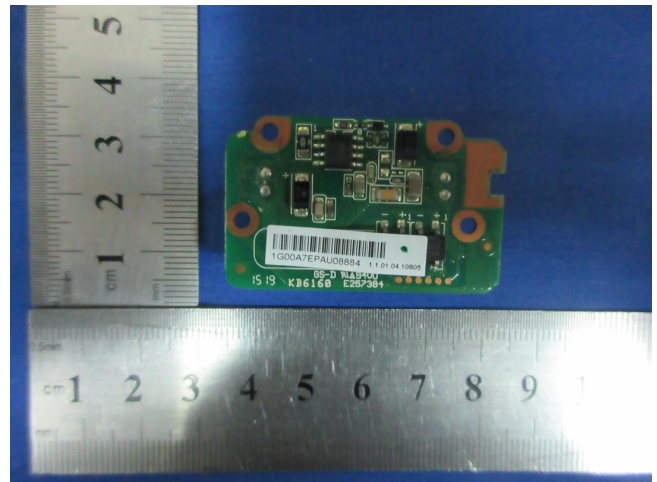
Unit Partially Disassembled View



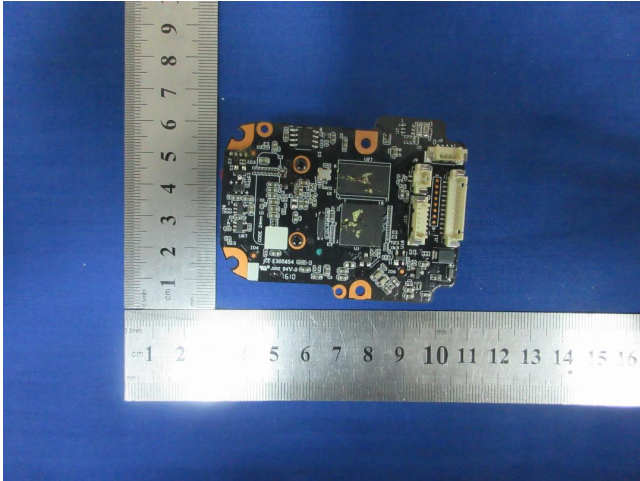
Unit Partially Disassembled View



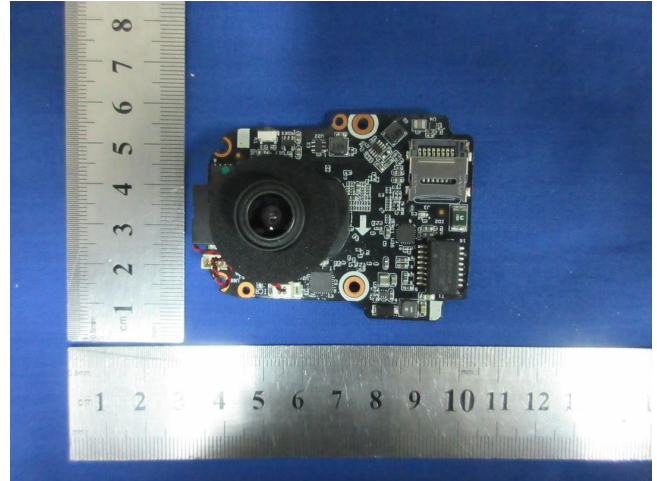
Unit Partially Disassembled View



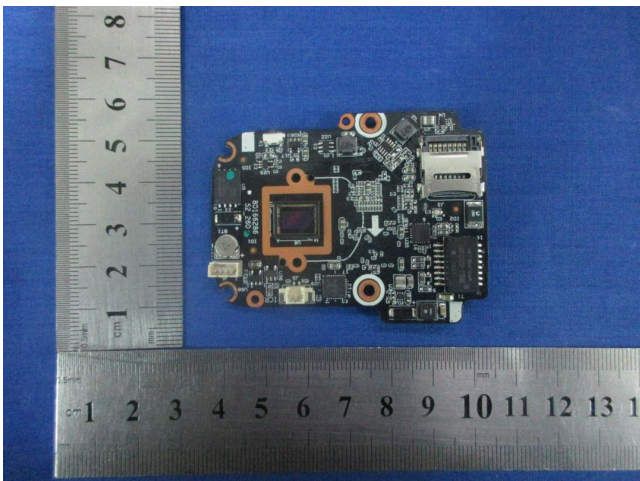
Unit Partially Disassembled View



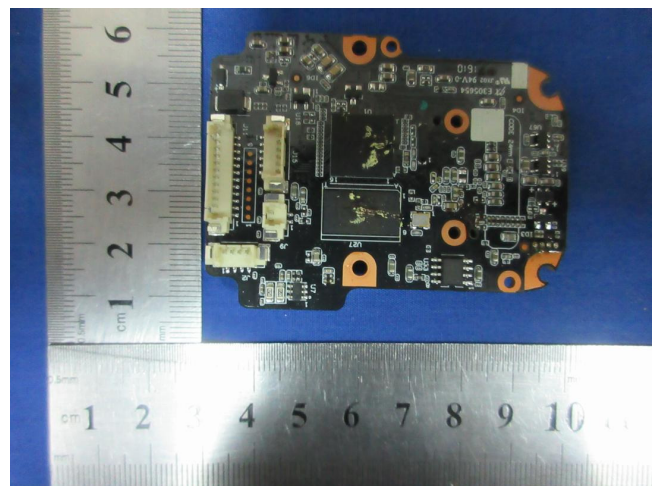
Unit Partially Disassembled View



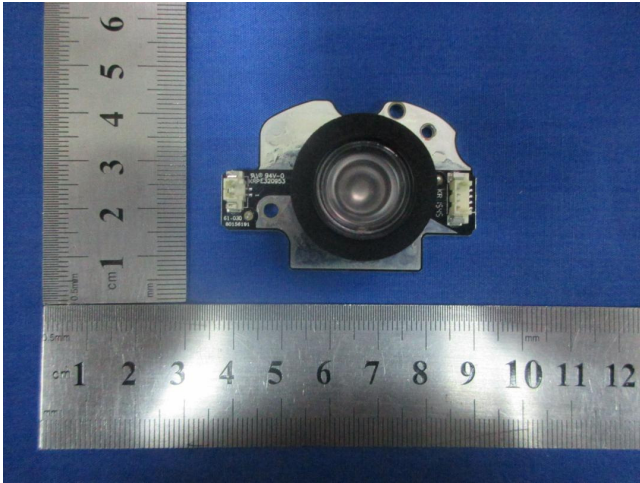
Unit Partially Disassembled View



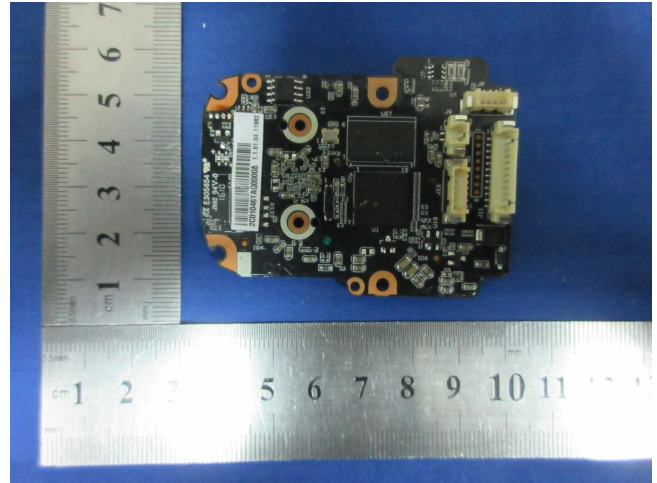
Sensor board for DH-IPC-HDW4830EMN-AS



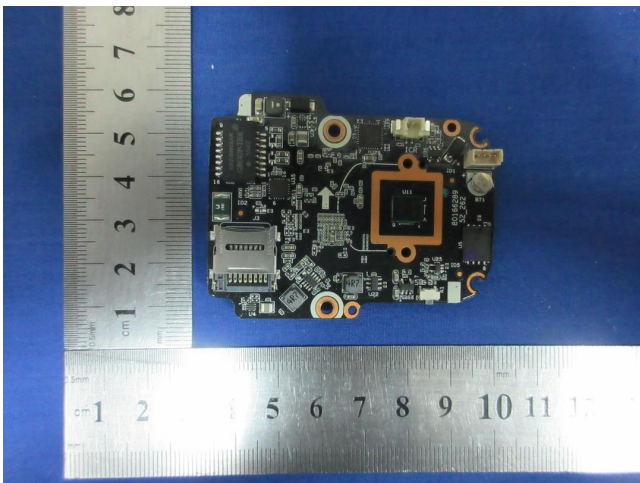
Sensor board for DH-IPC-HDW4830EMN-AS



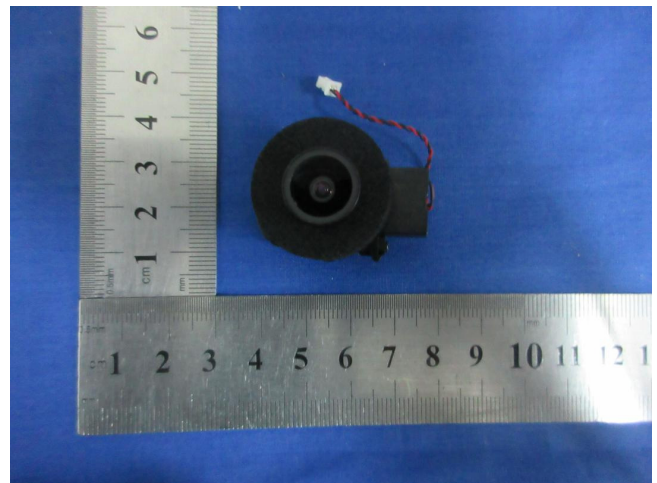
Len for DH-IPC-HDW4830EMN-AS



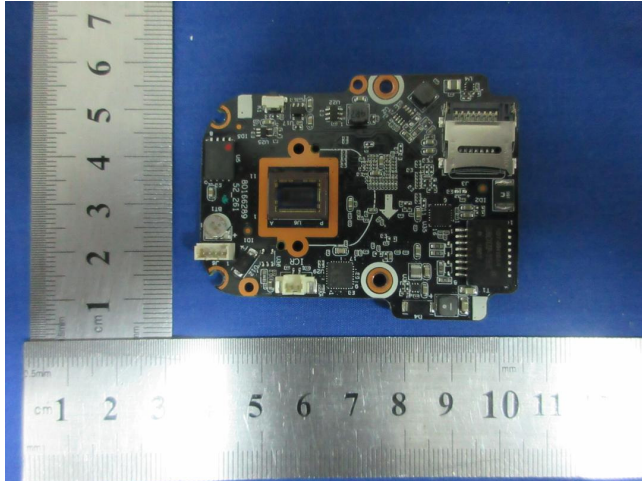
Sensor board for DH-IPC-HDW4431EMN-AS



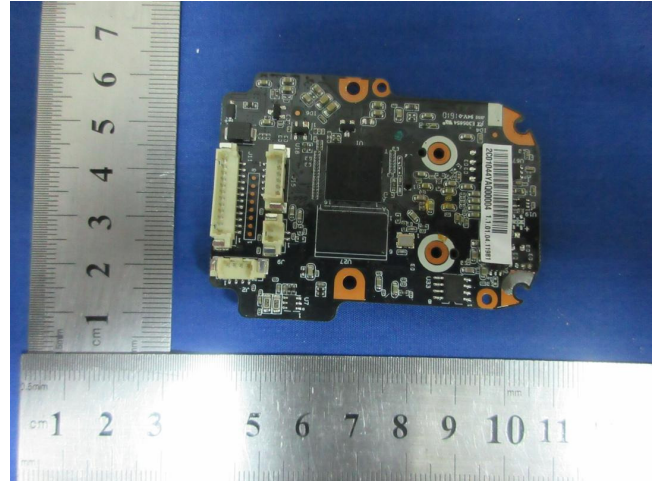
Sensor board for DH-IPC-HDW4431EMN-AS



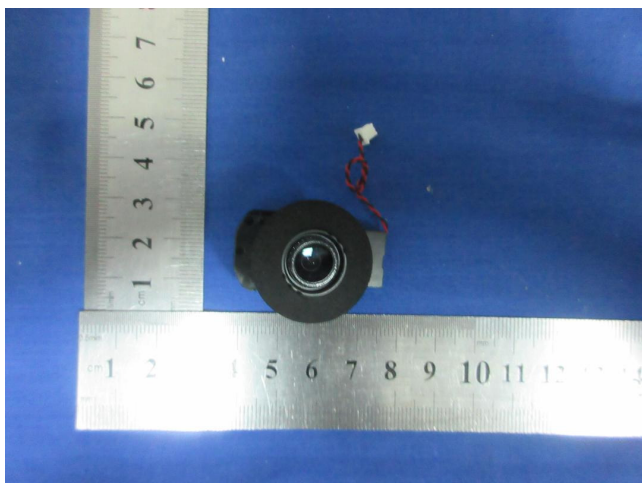
Len for DH-IPC-HDW4431EMN-AS



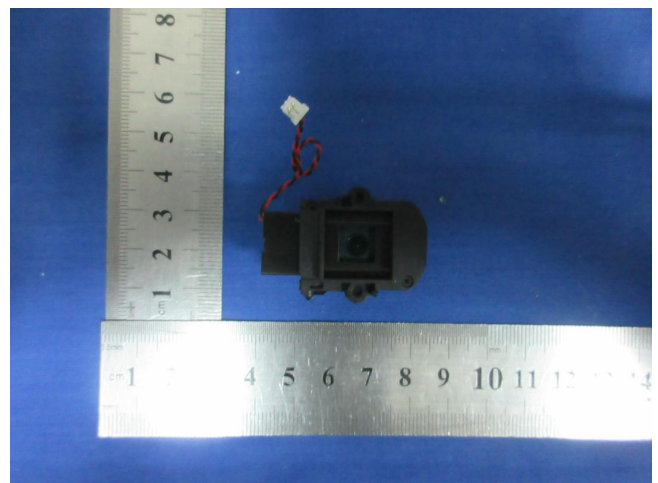
Sensor board for DH-IPC-HDW4231EMN-AS



Sensor board for DH-IPC-HDW4231EMN-AS



Len for DH-IPC-HDW4231EMN-AS



Len for DH-IPC-HDW4231EMN-AS